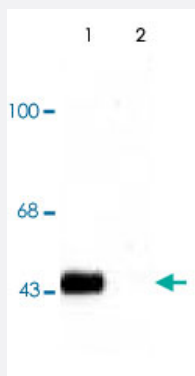


# Creb1 (phospho S133) polyclonal antibody

Catalog # PAB9674

Size 100 uL

## Applications



### Western Blot (Tissue lysate)

Western blot of a forskolin stimulated rat hippocampal lysate showing specific immunolabeling of the ~45k Phospho-Creb1 S133 (Left Lane). The right lane is indicative that the specific immunolabeling of the Creb1 protein is completely eliminated by treatment with lambda phosphatase (lambda-Ptase, 1200 units for 30 min).

## Specification

Product Description	Rabbit polyclonal antibody raised against synthetic phosphopeptide of Creb1.
Immunogen	Synthetic phosphopeptide corresponding to residues surrounding S133 of rat Creb1.
Host	Rabbit
Theoretical MW (kDa)	45
Reactivity	Bovine, Chicken, Clawed frog, Dog, Human, Mouse, Primates, Rat, Sheep, Zebra fish
Form	Liquid
Purification	Affinity purification
Quality Control Testing	Antibody Reactive Against Synthetic Peptide.
Recommend Usage	Western Blot (1:1000) The optimal working dilution should be determined by the end user.
Storage Buffer	In 10 mM HEPES, 150 mM NaCl, pH 7.5 (50% glycerol, 10% BSA)

**Storage Instruction**

Store at -20°C.  
Aliquot to avoid repeated freezing and thawing.

## Applications

- Western Blot (Tissue lysate)

Western blot of a forskolin stimulated rat hippocampal lysate showing specific immunolabeling of the ~45k Phospho-Creb1 S133 (Left Lane). The right lane is indicative that the specific immunolabeling of the Creb1 protein is completely eliminated by treatment with lambda phosphatase (lambda-Ptase, 1200 units for 30 min).

## Gene Info — Creb1

Entrez GeneID	<a href="#">81646</a>
---------------	-----------------------

Protein Accession#	<a href="#">P15337</a>
--------------------	------------------------

Gene Name	Creb1
-----------	-------

Gene Alias	Creb
------------	------

Gene Description	cAMP responsive element binding protein 1
------------------	---

Gene Ontology	<a href="#">Hyperlink</a>
---------------	---------------------------

Other Designations	Y protein cAMP response element binding protein 1
--------------------	---

## Publication Reference

- [What turns CREB on?](#)

Johannessen M, Delghandi MP, Moens U.  
Cellular Signalling 2004 Nov; 16(11):1211.

Application: WB, Human, Human cancers, Mammalian cells

- [CREB transcriptional activity in neurons is regulated by multiple, calcium-specific phosphorylation events.](#)

Kornhauser JM, Cowan CW, Shaywitz AJ, Dolmetsch RE, Griffith EC, Hu LS, Haddad C, Xia Z, Greenberg ME.  
Neuron 2002 Apr; 34(2):221.

Application: WB-Tr, Monkey, Rat, Cortical neurons, COS cells

- [CREB: a stimulus-induced transcription factor activated by a diverse array of extracellular signals.](#)

Shaywitz AJ, Greenberg ME.

Annual Review of Biochemistry 1999 Jan; 68:821.

Application: WB-Ce, WB-Tr, Human, Rat, Hippocampal neurons, Mammalian cells, PC-12 cells