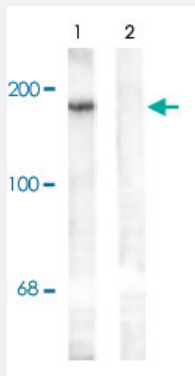


Grin2b (phospho Y1336) polyclonal antibody

Catalog # PAB9672

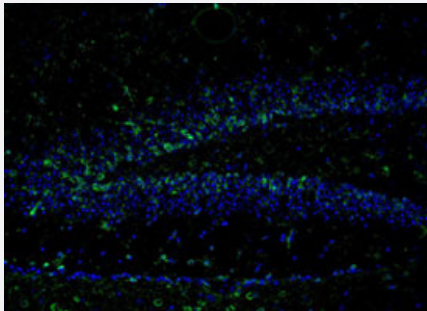
Size 100 uL

Applications



Western Blot (Tissue lysate)

Western blot of rat hippocampal lysate showing specific immunolabeling of the ~180k Grin2b subunit of the NMDAR phosphorylated at Tyr1336 (Control). The phosphospecificity of this labeling is shown in the second lane (lambda-phosphatase: lambda-Ptase). The blot is identical to the control except that it was incubated in lambda-Ptase (1200 units for 30 min) before being exposed to the Grin2b (phospho Y1336) polyclonal antibody (Cat # PAB9672). The immunolabeling is completely eliminated by treatment with lambda-Ptase.



Immunofluorescence

Immunochemical staining of mouse dentate gyrus showing merged labeling 48 hours post TMT treatment with Grin2b (phospho Y1336) polyclonal antibody (Cat # PAB9672) (green) and DAPI labeled nuclei (blue). Photo courtesy of Robert Wine.

Specification

Product Description	Rabbit polyclonal antibody raised against synthetic phosphopeptide of Grin2b.
Immunogen	Synthetic phosphopeptide corresponding to residues surrounding Y1336 of rat Grin2b.
Host	Rabbit
Theoretical MW (kDa)	180
Reactivity	Human, Mouse, Rat
Form	Liquid

Purification	Affinity purification
Quality Control Testing	Antibody Reactive Against Synthetic Peptide.
Recommend Usage	Western Blot (1:1000) The optimal working dilution should be determined by the end user.
Storage Buffer	In 10 mM HEPES, 150 mM NaCl, pH 7.5 (50% glycerol, 10% BSA)
Storage Instruction	Store at -20°C. Aliquot to avoid repeated freezing and thawing.

Applications

- Western Blot (Tissue lysate)

Western blot of rat hippocampal lysate showing specific immunolabeling of the ~180k Grin2b subunit of the NMDAR phosphorylated at Tyr1336 (Control). The phosphospecificity of this labeling is shown in the second lane (lambda-phosphatase: lambda-Ptase). The blot is identical to the control except that it was incubated in lambda-Ptase (1200 units for 30 min) before being exposed to the Grin2b (phospho Y1336) polyclonal antibody (Cat # PAB9672). The immunolabeling is completely eliminated by treatment with lambda-Ptase.

- Immunofluorescence

Immunochemical staining of mouse dentate gyrus showing merged labeling 48 hours post TMT treatment with Grin2b (phospho Y1336) polyclonal antibody (Cat # PAB9672) (green) and DAPI labeled nuclei (blue). Photo courtesy of Robert Wine.

Gene Info — Grin2b

Entrez GeneID	24410
Protein Accession#	Q00960
Gene Name	Grin2b
Gene Alias	-
Gene Description	glutamate receptor, ionotropic, N-methyl D-aspartate 2B
Gene Ontology	Hyperlink
Gene Summary	ionotropic
Other Designations	glutamate receptor, ionotropic, NMDA2B

Publication Reference

- [NMDA-receptor trafficking and targeting: implications for synaptic transmission and plasticity.](#)
Carroll RC, Zukin RS.
Trends in Neurosciences 2002 Nov; 25(11):571.
- [Trafficking of NMDA receptors.](#)
Wenthold RJ, Prybylowski K, Standley S, Sans N, Petralia RS.
Annual Review of Pharmacology and Toxicology 2002 Jan; 43:335.
- [Modulation of NMDA receptor-dependent calcium influx and gene expression through EphB receptors.](#)
Takasu MA, Dalva MB, Zigmond RE, Greenberg ME.
Science 2002 Jan; 295(5554):491.

Application: WB-Tr, Human, HEK 293T cells