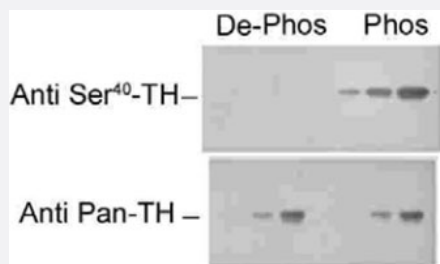


Th (phospho S40) polyclonal antibody

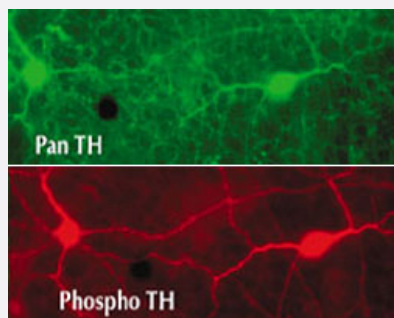
Catalog # PAB9653 Size 100 uL

Applications



Western Blot (Recombinant protein)

Western blot of recombinant phospho- and dephospho-Th showing selective immunolabeling by the phospho-specific antibody of the ~60k Th phosphorylated at Ser40. The pan-specific antibody (anti-pan-Th) recognized both the phospho- and dephospho-Th; while most importantly, the Th (phospho S40) polyclonal antibody (Cat # PAB9653) recognized only phospho-Th.



Immunofluorescence

Immunohistochemical staining of retina with the pan-tyrosine hydroxylase (pan-TH) and Th (phospho S40) polyclonal antibody (Cat # PAB9653). The pan-TH antibody shows extensive labeling in this photomicrograph of the retina. In contrast, the phospho-TH antibody selectively labels only the two amacrine cells in this light-stimulated retina example.

Specification

Product Description	Rabbit polyclonal antibody raised against synthetic phosphopeptide of Th.
Immunogen	Synthetic phosphopeptide corresponding to residues surrounding S40 of rat Th.
Host	Rabbit
Theoretical MW (kDa)	60
Reactivity	Rat
Form	Liquid
Purification	Affinity purification

Quality Control Testing	Antibody Reactive Against Synthetic Peptide.
Recommend Usage	Immunohistochemistry (Frozen sections) (1:1000) Western Blot (1:1000) The optimal working dilution should be determined by the end user.
Storage Buffer	In 10 mM HEPES, 150 mM NaCl, pH 7.5 (50% glycerol, 10% BSA)
Storage Instruction	Store at -20°C. Aliquot to avoid repeated freezing and thawing.

Applications

- Western Blot (Recombinant protein)

Western blot of recombinant phospho- and dephospho-Th showing selective immunolabeling by the phospho-specific antibody of the ~60k Th phosphorylated at Ser40. The pan-specific antibody (anti-pan-Th) recognized both the phospho- and dephospho-Th; while most importantly, the Th (phospho S40) polyclonal antibody (Cat # PAB9653) recognized only phospho-Th.

- Immunohistochemistry (Frozen sections)

- Immunofluorescence

Immunohistochemical staining of retina with the pan-tyrosine hydroxylase (pan-TH) and Th (phospho S40) polyclonal antibody (Cat # PAB9653). The pan-TH antibody shows extensive labeling in this photomicrograph of the retina. In contrast, the phospho-TH antibody selectively labels only the two amacrine cells in this light-stimulated retina example.

Gene Info — Th

Entrez GeneID	25085
Protein Accession#	P04177
Gene Name	Th
Gene Alias	The
Gene Description	tyrosine hydroxylase
Gene Ontology	Hyperlink
Other Designations	-

Publication Reference

- [Tyrosine hydroxylase phosphorylation: regulation and consequences.](#)

Dunkley PR, Bobrovskaya L, Graham ME, von Nagy-Felsobuki EI, Dickson PW.

Journal of Neurochemistry 2004 Dec; 91(5):1025.

Application: WB-Ce, Bovine, Bovine adrenal chromaffin cells

- [Acute administration of cocaine regulates the phosphorylation of serine-19, -31 and -40 in tyrosine hydroxylase.](#)

Jedynak JP, Ali SF, Haycock JW, Hope BT.

Journal of Neurochemistry 2002 Jul; 82(2):382.

Application: WB-Ti, Rat, Rat caudate samples

- [Striatal dopaminergic and serotonergic markers in human heroin users.](#)

Kish SJ, Kalasinsky KS, Derkach P, Schmunk GA, Guttman M, Ang L, Adams V, Furukawa Y, Haycock JW.

Neuropsychopharmacology: Official Publication of the American College of Neuropsychopharmacology 2001 May; 24(5):561.