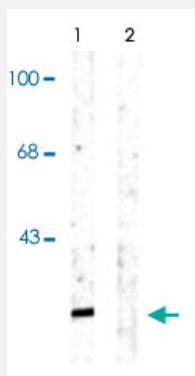


Snca (phospho S129) polyclonal antibody

Catalog # PAB9640

Size 100 uL

Applications



Western Blot (Tissue lysate)

Western blot of rat cortex lysate showing specific labeling of the ~15 k Snca protein phosphorylated at Ser129. Immunolabeling is blocked by the phosphopeptide (peptide) used as antigen but not by the corresponding dephosphopeptide (not shown).

Specification

Product Description	Rabbit polyclonal antibody raised against synthetic phosphopeptide of Snca.
Immunogen	Synthetic phosphopeptide corresponding to residues surrounding S129 of rat Snca.
Host	Rabbit
Theoretical MW (kDa)	15
Reactivity	Bovine, Dog, Human, Mouse, Primates, Rat
Form	Liquid
Purification	Affinity purification
Quality Control Testing	Antibody Reactive Against Synthetic Peptide.
Recommend Usage	Western Blot (1:1000) The optimal working dilution should be determined by the end user.
Storage Buffer	In 10 mM HEPES, 150 mM NaCl, pH 7.5 (50% glycerol, 10% BSA)

Storage Instruction

Store at -20°C.
Aliquot to avoid repeated freezing and thawing.

Applications

- Western Blot (Tissue lysate)

Western blot of rat cortex lysate showing specific labeling of the ~15 k Snca protein phosphorylated at Ser129. Immunolabeling is blocked by the phosphopeptide (peptide) used as antigen but not by the corresponding dephosphopeptide (not shown).

Gene Info — Snca

Entrez GeneID [29219](#)

Protein Accession# [P37377](#)

Gene Name Snca

Gene Alias MGC105443

Gene Description synuclein, alpha (non A4 component of amyloid precursor)

Gene Ontology [Hyperlink](#)

Gene Summary O

Other Designations alpha-synuclein

Publication Reference

- [Effects of alpha-synuclein immunization in a mouse model of Parkinson's disease.](#)

Maslah E, Rockenstein E, Adame A, Alford M, Crews L, Hashimoto M, Seubert P, Lee M, Goldstein J, Chilcote T, Games D, Schenk D.

Neuron 2005 Jun; 46(6):857.

- [Alpha-synuclein phosphorylation enhances eosinophilic cytoplasmic inclusion formation in SH-SY5Y cells.](#)

Smith WW, Margolis RL, Li X, Troncoso JC, Lee MK, Dawson VL, Dawson TM, Iwatsubo T, Ross CA.

The Journal of Neuroscience 2005 Jun; 25(23):5544.

Application: WB-Tr, Human, SH-SY5Y cells

- [Misfolded proteinase K-resistant hyperphosphorylated alpha-synuclein in aged transgenic mice with locomotor deterioration and in human alpha-synucleinopathies.](#)

Neumann M, Kahle PJ, Giasson BI, Ozmen L, Borroni E, Spooren W, Muller V, Odoy S, Fujiwara H, Hasegawa M, Iwatsubo T, Trojanowski JQ, Kretschmar HA, Haass C.

The Journal of Clinical Investigation 2002 Nov; 110(10):1429.

Application: IHC-P, WB-Ti, Human, Mouse, Brain