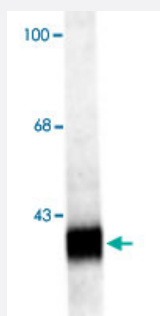


Synpr polyclonal antibody

Catalog # PAB9638 Size 100 uL

Applications



Western Blot (Tissue lysate)

Western blot of rat hippocampal lysate showing specific labeling of the ~38k Synpr protein. Using Synpr polyclonal antibody (Cat # PAB9638).

Specification

Product Description	Rabbit polyclonal antibody raised against synthetic peptide of Synpr.
Immunogen	A synthetic peptide (conjugated with KLH) corresponding to C-terminus rat Synpr.
Host	Rabbit
Theoretical MW (kDa)	38
Reactivity	Mouse, Rat
Form	Liquid
Purification	Affinity purification
Quality Control Testing	Antibody Reactive Against Synthetic Peptide.
Recommend Usage	Western Blot (1:1000) The optimal working dilution should be determined by the end user.
Storage Buffer	In 10 mM HEPES, 150 mM NaCl, pH 7.5 (50% glycerol, 10% BSA)
Storage Instruction	Store at -20°C. Aliquot to avoid repeated freezing and thawing.

Applications

- Western Blot (Tissue lysate)

Western blot of rat hippocampal lysate showing specific labeling of the ~38k Synpr protein. Using Synpr polyclonal antibody (Cat # PAB9638).

Gene Info — Synpr

Entrez GeneID [66030](#)

Protein Accession# [P22831](#)

Gene Name Synpr

Gene Alias -

Gene Description synaptoporin

Gene Ontology [Hyperlink](#)

Other Designations synaptorin

Publication Reference

- [Cloning and sequence analysis of the human cDNA encoding the synaptoporin \(delta\), a highly conservative synaptic vesicle protein.](#)

Dai J, Ji C, Gu S, Wu Q, Wang L, Xu J, Zeng L, Ye X, Yin G, Xie Y, Mao Y.

Molecular Biology Reports 2003 Sep; 30(3):185.

- [Synaptic vesicle protein synaptoporin is differently expressed by subpopulations of mouse hippocampal neurons.](#)

Singec I, Knoth R, Ditter M, Hagemeyer CE, Rosenbrock H, Frotscher M, Volk B.

The Journal of Comparative Neurology 2002 Oct; 452(12):139.

Application: IF, WB-Ti, Mouse, Hippocampus

- [Differential expression of synaptophysin and synaptoporin during pre- and postnatal development of the rat hippocampal network.](#)

Grabs D, Bergmann M, Schuster T, Fox PA, Brich M, Gratz M.

The European Journal of Neuroscience 1994 Nov; 6(11):1765.

Application: IEM, IF, IHC-P, WB-Ti, Rat, Rat brains