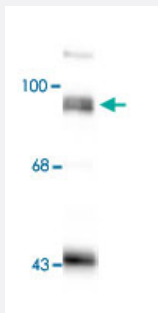


PSD-95 polyclonal antibody

Catalog # PAB9623 Size 100 uL

Applications



Western Blot (Tissue lysate)

Western blot of rat hippocampal (Hipp) lysate showing specific immunolabeling of the ~95k PSD-95 protein. Using PSD-95 polyclonal antibody (Cat # PAB9623).

Specification

Product Description	Rabbit polyclonal antibody raised against synthetic peptide of PSD-95.
Immunogen	A synthetic peptide (conjugated with KLH) corresponding to N-terminus rat PSD-95.
Host	Rabbit
Theoretical MW (kDa)	95
Reactivity	Bovine, Human, Mouse, Primates, Rat, Zebra fish
Form	Liquid
Purification	Affinity purification
Quality Control Testing	Antibody Reactive Against Synthetic Peptide.
Recommend Usage	Western Blot (1:1000) The optimal working dilution should be determined by the end user.
Storage Buffer	In 10 mM HEPES, 150 mM NaCl, pH 7.5 (50% glycerol, 10% BSA)
Storage Instruction	Store at -20°C. Aliquot to avoid repeated freezing and thawing.

Applications

- Western Blot (Tissue lysate)

Western blot of rat hippocampal (Hipp) lysate showing specific immunolabeling of the ~95k PSD-95 protein. Using PSD-95 polyclonal antibody (Cat # PAB9623).

Publication Reference

- [Regulation of the NMDA receptor complex and trafficking by activity-dependent phosphorylation of the NR2B subunit PDZ ligand.](#)

Chung HJ, Huang YH, Lau LF, Huganir RL.

Journal of Neuroscience 2004 Nov; 24(45):10248.

Application: IF, IHC, WB, Human, Rat, HEK 293T cells, Rat brains

- [PDZ domain proteins of synapses.](#)

Kim E, Sheng M.

Nature Reviews. Neuroscience 2004 Oct; 5(10):771.

Application: IHC, WB, Human, Mouse, Mammalian cells