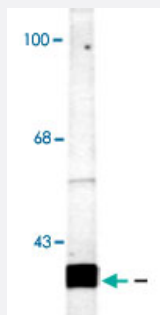


# Snap25 polyclonal antibody

Catalog # PAB9622      Size 100 uL

## Applications



### Western Blot (Tissue lysate)

Western blot of rat cortex lysate showing specific labeling of the ~25k Snap25 protein. Using Snap25 polyclonal antibody (Cat # PAB9622).

## Specification

<b>Product Description</b>	Rabbit polyclonal antibody raised against synthetic peptide of Snap25.
<b>Immunogen</b>	A synthetic peptide (conjugated with KLH) corresponding to C-terminus rat Snap25.
<b>Host</b>	Rabbit
<b>Theoretical MW (kDa)</b>	25
<b>Reactivity</b>	Bovine, Chicken, Dog, Guinea pig, Human, Mouse, Primates, Rat, Zebra fish
<b>Form</b>	Liquid
<b>Purification</b>	Affinity purification
<b>Quality Control Testing</b>	Antibody Reactive Against Synthetic Peptide.
<b>Recommend Usage</b>	Western Blot (1:1000) The optimal working dilution should be determined by the end user.
<b>Storage Buffer</b>	In 10 mM HEPES, 150 mM NaCl, pH 7.5 (50% glycerol, 10% BSA)
<b>Storage Instruction</b>	Store at -20°C. Aliquot to avoid repeated freezing and thawing.

## Applications

- Western Blot (Tissue lysate)

Western blot of rat cortex lysate showing specific labeling of the ~25k Snap25 protein. Using Snap25 polyclonal antibody (Cat # PAB9622).

## Gene Info — Snap25

Entrez GeneID [25012](#)

Protein Accession# [P60881](#)

Gene Name Snap25

Gene Alias MGC105414, SNAP-25B

Gene Description synaptosomal-associated protein 25

Gene Ontology [Hyperlink](#)

Gene Summary 25 kDa

Other Designations synaptosomal-associated protein, 25 kDa

## Publication Reference

- [Negative regulation of neurotransmitter release by calpain: a possible involvement of specific SNAP-25 cleavage.](#)

Ando K, Kudo Y, Takahashi M.

Journal of Neurochemistry 2005 Aug; 94(3):651.

Application: WB-Ce, Rat, Cerebellar granule cells

- [Altered levels of the synaptosomal associated protein SNAP-25 in hippocampus of subjects with mood disorders and schizophrenia.](#)

Fatemi SH, Earle JA, Stary JM, Lee S, Sedgewick J.

Neuroreport 2001 Oct; 12(15):3257.

Application: IHC-Fr, Human, Human ventral hippocampus

- [Decreased levels of synaptosomal associated protein 25 in the brain of patients with Down syndrome and Alzheimer's disease.](#)

Greber S, Lubec G, Cairns N, Fountoulakis M.

Electrophoresis 1999 Apr; 20(4-5):928.