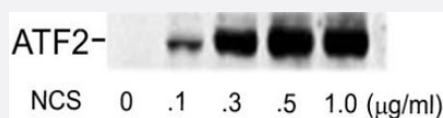


ATF2 (phospho S490/S498) polyclonal antibody

Catalog # PAB9605 Size 100 uL

Applications

Western Blot (Cell lysate)



Western blot of human melanoma cells incubated with varying doses of the radiomimetic drug NCS showing specific immuno-labeling of the ~74k ATF2 protein phosphorylated at Ser490 and Ser498.

Specification

Product Description	Rabbit polyclonal antibody raised against synthetic phosphopeptide of ATF2.
Immunogen	Synthetic phosphopeptide corresponding to residues surrounding S490/S498 of human ATF2.
Host	Rabbit
Theoretical MW (kDa)	74
Reactivity	Human, Rat
Form	Liquid
Purification	Affinity purification
Quality Control Testing	Antibody Reactive Against Synthetic Peptide.
Recommend Usage	Immunohistochemistry (Frozen sections) (1:1000) Western Blot (1:1000) The optimal working dilution should be determined by the end user.
Storage Buffer	In 10 mM HEPES, 150 mM NaCl, pH 7.5 (50% glycerol, 10% BSA)

Storage Instruction

Store at -20°C.

Aliquot to avoid repeated freezing and thawing.

Applications

- Western Blot (Cell lysate)

Western blot of human melanoma cells incubated with varying doses of the radiomimetic drug NCS showing specific immunolabeling of the ~74k ATF2 protein phosphorylated at Ser490 and Ser498.

- Immunohistochemistry (Frozen sections)

Gene Info — ATF2

Entrez GeneID	1386
---------------	----------------------

Protein Accession#	P15336
--------------------	------------------------

Gene Name	ATF2
-----------	------

Gene Alias	CRE-BP1, CREB2, HB16, MGC111558, TREB7
------------	--

Gene Description	activating transcription factor 2
------------------	-----------------------------------

Omim ID	123811
---------	------------------------

Gene Ontology	Hyperlink
---------------	---------------------------

Gene Summary	This gene encodes a transcription factor that is a member of the leucine zipper family of DNA binding proteins. This protein binds to the cAMP-responsive element (CRE), an octameric palindromic sequence. The protein forms a homodimer or heterodimer with c-Jun and stimulates CRE-dependent transcription. The protein is also a histone acetyltransferase (HAT) that specifically acetylates histones H2B and H4 in vitro; thus it may represent a class of sequence-specific factors that activate transcription by direct effects on chromatin components. Additional transcript variants have been identified but their biological validity has not been determined. [provided by RefSeq]
--------------	--

Other Designations	OTTHUMP00000163262 activating transcription factor 2 splice variant ATF2-var2 cAMP responsive element binding protein 2, formerly
--------------------	---

Publication Reference

- [Role of the Exocyst Complex Component Sec6/8 in Genomic Stability.](#)

Torres MJ, Pandita RK, Kulak O, Kumar R, Formstecher E, Horikoshi N, Mujoo K, Hunt CR, Zhao Y, Lum L, Zaman A, Yeaman C, White MA, Pandita TK.

Molecular and Cellular Biology 2015 Nov; 35(21):3633.

Application: WB-Tr, Human, U2OS cells

- [Signalling pathways involved in multisite phosphorylation of the transcription factor ATF-2.](#)

Morton S, Davis RJ, Cohen P.

FEBS Letters 2004 Aug; 572(1-3):177.

- [ATF2, a member of the CREB/ATF family of transcription factors, in chronic stress and consequent to antidepressant treatment: animal models and human post-mortem brains.](#)

Laifenfeld D, Karry R, Grauer E, Klein E, Ben-Shachar D.

Neuropsychopharmacology 2004 Mar; 29(3):587.

- [Death receptors and melanoma resistance to apoptosis.](#)

Ivanov VN, Bhoumik A, Ronai Z.

Oncogene 2003 May; 22(20):3152.

Application: IHC, WB, Human, Cancer, Mammalian cells, Melanomas

Pathway

- [MAPK signaling pathway](#)

Disease

- [Bipolar Disorder](#)
- [Cardiovascular Diseases](#)
- [Diabetes Mellitus](#)
- [Edema](#)
- [Genetic Predisposition to Disease](#)
- [Schizophrenia](#)
- [Tobacco Use Disorder](#)