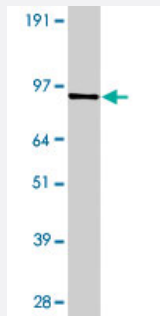


Pde7b polyclonal antibody

Catalog # PAB8978

Size 100 ug

Applications



Western Blot (Recombinant protein)

Western blot of Pde7b polyclonal antibody (Cat # PAB8978) with protein-coupled Pde7b. Antibody dilution at 1 : 750.

Specification

Product Description	Rabbit polyclonal antibody raised against synthetic peptide of Pde7b.
Immunogen	A synthetic peptide corresponding to rat Pde7b.
Host	Rabbit
Reactivity	Mouse, Rat
Form	Liquid
Quality Control Testing	Antibody Reactive Against Synthetic Peptide.
Recommend Usage	Western Blot (1:500) Immunoprecipitation (1:250) The optimal working dilution should be determined by the end user.
Storage Buffer	In buffer containing 0.02% sodium azide
Storage Instruction	Store at -20°C. Aliquot to avoid repeated freezing and thawing.
Note	This product contains sodium azide: a POISONOUS AND HAZARDOUS SUBSTANCE which should be handled by trained staff only.

Applications

- Western Blot (Recombinant protein)

Western blot of Pde7b polyclonal antibody (Cat # PAB8978) with protein-coupled Pde7b. Antibody dilution at 1 : 750.

- Immunoprecipitation

Gene Info — Pde7b

Entrez GeneID	140929
---------------	------------------------

Gene Name	Pde7b
-----------	-------

Gene Alias	-
------------	---

Gene Description	phosphodiesterase 7B
------------------	----------------------

Gene Ontology	Hyperlink
---------------	---------------------------

Other Designations	-
--------------------	---