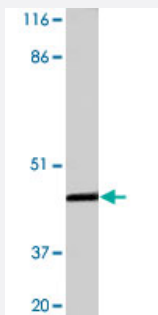


INHA polyclonal antibody

Catalog # PAB8965

Size 100 ug

Applications



Western Blot (Recombinant protein)

Western blot of INHA polyclonal antibody (Cat # PAB8965) with protein-coupled INHA samples. Antibody dilution at 1:500.

Specification

Product Description	Rabbit polyclonal antibody raised against synthetic peptide of INHA.
Immunogen	A synthetic peptide (conjugated with KLH) corresponding to amino acids 18-23 of human INHA.
Host	Rabbit
Reactivity	Human, Mouse, Rat
Form	Liquid
Quality Control Testing	Antibody Reactive Against Synthetic Peptide.
Recommend Usage	ELISA (1:20000) Dot Blot (1:20000) Western Blot (1:500) Immunohistochemistry (1:200) The optimal working dilution should be determined by the end user.
Storage Buffer	In buffer containing 0.02% sodium azide
Storage Instruction	Store at -20°C. Aliquot to avoid repeated freezing and thawing.

Note

This product contains sodium azide: a POISONOUS AND HAZARDOUS SUBSTANCE which should be handled by trained staff only.

Applications

- Western Blot (Recombinant protein)

Western blot of INHA polyclonal antibody (Cat # PAB8965) with protein-coupled INHA samples. Antibody dilution at 1:500.

- Immunohistochemistry

- Enzyme-linked Immunoabsorbent Assay

- Dot Blot

Gene Info — INHA

Entrez GeneID	3623
---------------	----------------------

Gene Name	INHA
-----------	------

Gene Alias	-
------------	---

Gene Description	inhibin, alpha
------------------	----------------

Omim ID	147380
---------	------------------------

Gene Ontology	Hyperlink
---------------	---------------------------

Gene Summary	<p>The inhibin alpha subunit joins either the beta A or beta B subunit to form a pituitary FSH secretory inhibitor. Inhibin has been shown to regulate gonadal stromal cell proliferation negatively and to have tumour-suppressor activity. In addition, serum levels of inhibin have been shown to reflect the size of granulosa-cell tumors and can therefore be used as a marker for primary as well as recurrent disease. However, in prostate cancer, expression of the inhibin alpha-subunit gene was suppressed and was not detectable in poorly differentiated tumor cells. Furthermore, because expression in gonadal and various extragonadal tissues may vary severalfold in a tissue-specific fashion, it is proposed that inhibin may be both a growth/differentiation factor and a hormone. [provided by RefSeq]</p>
--------------	---

Other Designations	A-inhibin subunit inhibin alpha subunit
--------------------	---

Publication Reference

- [Inhibin is more specific than calretinin as an immunohistochemical marker for differentiating sarcomatoid granulosa cell tumour of the ovary from other spindle cell neoplasms.](#)

Shah VI, Freites ON, Maxwell P, McCluggage WG.

Journal of Clinical Pathology 2003 Mar; 56(3):221.

Application: IHC-P, Human, Human granulosa cell tumour

- [Gonadal and extragonadal expression of inhibin alpha, beta A, and beta B subunits in various tissues predicts diverse functions.](#)

Meunier H, Rivier C, Evans RM, Vale W.

PNAS 1988 Jan; 85(1):247.

- [Heterodimers and homodimers of inhibin subunits have different paracrine action in the modulation of luteinizing hormone-stimulated androgen biosynthesis.](#)

Hsueh AJ, Dahl KD, Vaughan J, Tucker E, Rivier J, Bardin CW, Vale W.

PNAS 1987 Jul; 84(14):5082.

Application: AFC, RIA, Purified proteins

Disease

- [Abortion](#)
- [Amenorrhea](#)
- [Breast Neoplasms](#)
- [Disease Models](#)
- [Fragile X syndrome](#)
- [Genetic Predisposition to Disease](#)
- [Infertility](#)
- [Neoplasms](#)
- [Obesity](#)
- [Ovarian cancer](#)
- [Ovarian Failure](#)
- [Ovarian Neoplasms](#)

- [Polycystic Ovary Syndrome](#)
- [Pre-Eclampsia](#)
- [Prostate cancer](#)
- [Prostatic Neoplasms](#)
- [Puberty](#)
- [Testicular Neoplasms](#)
- [Thrombophilia](#)
- [Tobacco Use Disorder](#)