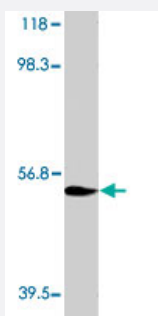


Il8rb polyclonal antibody

Catalog # PAB8942

Size 100 ug

Applications



Western Blot (Recombinant protein)

Western blot of Il8rb polyclonal antibody (Cat # PAB8942) with Chemokine receptor. Antibody dilution at 1:500.

Specification

| | |
|--------------------------------|---|
| Product Description | Rabbit polyclonal antibody raised against synthetic peptide of Il8rb. |
| Immunogen | A synthetic peptide corresponding to C-terminus of rat/mouse Il8rb. |
| Host | Rabbit |
| Reactivity | Human, Mouse, Rat |
| Form | Liquid |
| Quality Control Testing | Antibody Reactive Against Synthetic Peptide. |
| Recommend Usage | Western Blot (1:500) Immunoprecipitation (1:250) The optimal working dilution should be determined by the end user. |
| Storage Buffer | In buffer containing 0.02% sodium azide |
| Storage Instruction | Store at -20°C. Aliquot to avoid repeated freezing and thawing. |
| Note | This product contains sodium azide: a POISONOUS AND HAZARDOUS SUBSTANCE which should be handled by trained staff only. |

Applications

- Western Blot (Recombinant protein)

Western blot of Il8rb polyclonal antibody (Cat # PAB8942) with Chemokine receptor. Antibody dilution at 1:500.

- Immunohistochemistry
- Immunoprecipitation

Gene Info — Il8rb

| | |
|--------------------|--|
| Entrez GeneID | 12765 |
| Gene Name | Il8rb |
| Gene Alias | CD128, CDw128, CXCR2, Cmkar2, Gpcr16, IL-8Rh, IL-8rb, IL8RA, mL-8RH |
| Gene Description | interleukin 8 receptor, beta |
| Gene Ontology | Hyperlink |
| Gene Summary | O |
| Other Designations | IL-8 receptor alpha chain chemokine (C-X-C) receptor 2 interleukin 8 receptor beta interleukin-8 receptor type B |

Gene Info — Il8rb

| | |
|--------------------|------------------------------|
| Entrez GeneID | 29385 |
| Gene Name | Il8rb |
| Gene Alias | Cmkar2 |
| Gene Description | interleukin 8 receptor, beta |
| Gene Ontology | Hyperlink |
| Gene Summary | O |
| Other Designations | chemokine (C-X-C) receptor 2 |

Publication Reference

- [Chemokine receptors: signposts to brain development and disease.](#)

Tran PB, Miller RJ.

Nature Reviews. Neuroscience 2003 Jun; 4(6):444.

- [Interleukin-8 secreted by endothelial cells induces chemotaxis of melanoma cells through the chemokine receptor CXCR1.](#)

Ramjeesingh R, Leung R, Siu CH.

FASEB Journal 2003 Jul; 17(10):1292.

Application: Func, WB, Human, WM239, WM35 cells

- [The role of chemokines and chemokine receptors in progressive renal diseases.](#)

Seegerer S.

American Journal of Kidney Diseases: the Official Journal of the National Kidney Foundation 2003 Mar; 41(3 Suppl 1):S15.