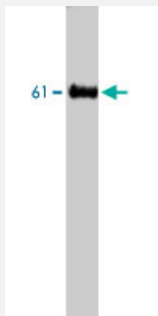


Adenosine deaminase 2 polyclonal antibody

Catalog # PAB8515

Size 25 ug

Applications



Western Blot (Tissue lysate)

Western blot analysis of extract from chicken liver, using Adenosine deaminase 2 polyclonal antibody (Cat # PAB8515) .

Specification

Product Description Rabbit polyclonal antibody raised against synthetic peptide of Adenosine deaminase 2.

Immunogen A synthetic peptide corresponding to chicken Adenosine deaminase 2.

Host Rabbit

Reactivity Chicken

Form Liquid

Quality Control Testing Antibody Reactive Against Synthetic Peptide.

Recommend Usage Western Blot (5 ug/mL)
The optimal working dilution should be determined by the end user.

Storage Buffer In PBS (0.1% proclin, 2.0% Block Ace)

Storage Instruction Store at -20°C.
Aliquot to avoid repeated freezing and thawing.

Applications

- Western Blot (Tissue lysate)

Western blot analysis of extract from chicken liver, using Adenosine deaminase 2 polyclonal antibody (Cat # PAB8515) .

Publication Reference

- [Adenosine deaminase 2 from chicken liver: purification, characterization, and N-terminal amino acid sequence.](#)

Iwaki-Egawa S, Namiki C, Watanabe Y.

Comparative Biochemistry and Physiology. Part B, Biochemistry & Molecular Biology 2004 Feb; 137(2):247.

Application: WB-Re, Recombinant protein