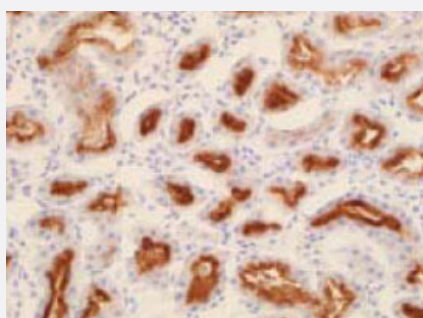


# Slc3a1 polyclonal antibody

Catalog # PAB8505

Size 25 ug

## Applications



### Immunohistochemistry (Frozen sections)

Immunohistochemical analysis of rat kidney tissue, using rBAT polyclonal antibody (Cat # PAB8505). Luminal side of renal tubule are positive stained.

## Specification

**Product Description** Rabbit polyclonal antibody raised against synthetic peptide of Slc3a1.

**Immunogen** A synthetic peptide corresponding to rat Slc3a1.

**Host** Rabbit

**Reactivity** Rat

**Form** Liquid

**Quality Control Testing** Antibody Reactive Against Synthetic Peptide.

**Recommend Usage** Immunohistochemistry (0.1-0.5 ug/mL)  
Western Blot (0.01-0.1 ug/mL)  
The optimal working dilution should be determined by the end user.

**Storage Buffer** In PBS (0.1% proclin, 2.0% Block Ace)

**Storage Instruction** Store at -20°C.  
Aliquot to avoid repeated freezing and thawing.

## Applications

- Western Blot
- Immunohistochemistry (Frozen sections)

Immunohistochemical analysis of rat kidney tissue, using rBAT polyclonal antibody (Cat # PAB8505). Luminal side of renal tubule are positive stained.

## Gene Info — Slc3a1

Entrez GeneID [29484](#)

Gene Name Slc3a1

Gene Alias -

Gene Description solute carrier family 3, member 1

Gene Ontology [Hyperlink](#)

Gene Summary O

Other Designations -

## Publication Reference

- [Human cystinuria-related transporter: localization and functional characterization.](#)

Mizoguchi K, Cha SH, Chairoungdua A, Kim DK, Shigeta Y, Matsuo H, Fukushima J, Awa Y, Akakura K, Goya T, Ito H, Endou H, Kanai Y.

Kidney International 2001 May; 59(5):1821.

- [Identification of an amino acid transporter associated with the cystinuria-related type II membrane glycoprotein.](#)

Chairoungdua A, Segawa H, Kim JY, Miyamoto K, Haga H, Fukui Y, Mizoguchi K, Ito H, Takeda E, Endou H, Kanai Y.

The Journal of Biological Chemistry 1999 Oct; 274(41):28845.

Application: IHC, WB-Ti, Rat, Kidney