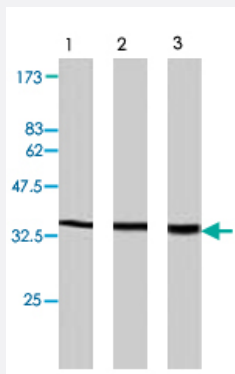


Plscr2 polyclonal antibody

Catalog # PAB8492

Size 100 ug

Applications



Western Blot (Cell lysate)

Western blot analysis of extract from PC-12 (lane 1) , NRK cells (lane 2) and Swiss3T3 cells (lane 3) , using Plscr2 polyclonal antibody (Cat # PAB8492) .

Specification

Product Description Rabbit polyclonal antibody raised against synthetic peptide of Plscr2.

Immunogen A synthetic peptide corresponding to mouse Plscr2.

Host Rabbit

Reactivity Mouse

Form Liquid

Quality Control Testing Antibody Reactive Against Synthetic Peptide.

Recommend Usage Western Blot (3-15 ug/mL)
The optimal working dilution should be determined by the end user.

Storage Buffer In PBS (0.1% proclin, 2.0% Block Ace)

Storage Instruction Store at -20°C.
Aliquot to avoid repeated freezing and thawing.

Applications

- Western Blot (Cell lysate)

Western blot analysis of extract from PC-12 (lane 1) , NRK cells (lane 2) and Swiss3T3 cells (lane 3) , using Plscr2 polyclonal antibody (Cat # PAB8492) .

Gene Info — Plscr2

Entrez GeneID	18828
---------------	-----------------------

Gene Name	Plscr2
-----------	--------

Gene Alias	-
------------	---

Gene Description	phospholipid scramblase 2
------------------	---------------------------

Gene Ontology	Hyperlink
---------------	---------------------------

Other Designations	OTTMUSP00000026446 PL scramblase
--------------------	----------------------------------

Publication Reference

- [Plasma membrane phospholipid scramblase 1 promotes EGF-dependent activation of c-Src through the epidermal growth factor receptor.](#)
Nanjundan M, Sun J, Zhao J, Zhou Q, Sims PJ, Wiedmer T.
The Journal of Biological Chemistry 2003 Sep; 278(39):37413.
- [Stimulation of phosphatidylserine biosynthesis and facilitation of UV-induced apoptosis in Chinese hamster ovary cells overexpressing phospholipid scramblase 1.](#)
Yu A, McMaster CR, Byers DM, Ridgway ND, Cook HW.
The Journal of Biological Chemistry 2003 Mar; 278(11):9706.
- [Transbilayer phospholipid movement and the clearance of apoptotic cells.](#)
Williamson P, Schlegel RA.
Biochimica et Biophysica Acta 2002 Dec; 1585(2-3):53.

- [Identity of a conserved motif in phospholipid scramblase that is required for Ca²⁺-accelerated transbilayer movement of membrane phospholipids.](#)

Zhou Q, Sims PJ, Wiedmer T.

Biochemistry 1998 Feb; 37(8):2356.

- [Molecular cloning of human plasma membrane phospholipid scramblase. A protein mediating transbilayer movement of plasma membrane phospholipids.](#)

Zhou Q, Zhao J, Stout JG, Luhm RA, Wiedmer T, Sims PJ.

The Journal of Biological Chemistry 1997 Jul; 272(29):18240.

Application: IP, WB-Ce, Human, Erythrocyte ghost membranes