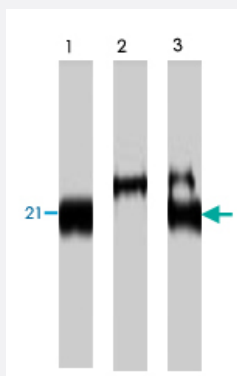


BNAS2 polyclonal antibody

Catalog # PAB8489

Size 25 ug

Applications



Western Blot (Transfected lysate)

Western blot analysis of COS-7 cells transfected with T7-tagged mouse BNAS2, using BNAS2 polyclonal antibody (Cat # PAB8489). Lane 1: extracts, lane 2: extracts immunoprecipitated with rabbit IgG and lane 3: extracts immunoprecipitated with mouse BNAS2 polyclonal antibody.

Specification

Product Description	Rabbit polyclonal antibody raised against synthetic peptide of BNAS2.
Immunogen	A synthetic peptide corresponding to mouse BNAS2.
Host	Rabbit
Reactivity	Mouse
Specificity	This antibody recognizes BASH N terminus associated protein 2 (BNAS2).
Form	Liquid
Quality Control Testing	Antibody Reactive Against Synthetic Peptide.
Recommend Usage	Western Blot (1-2 ug/mL) Immunoprecipitation (1 ug/mL) Immunocytochemistry (1 ug/mL) The optimal working dilution should be determined by the end user.
Storage Buffer	In PBS (0.1% proclin, 2.0% Block Ace)

Storage Instruction

Store at -20°C.

Aliquot to avoid repeated freezing and thawing.

Applications

- Western Blot (Transfected lysate)

Western blot analysis of COS-7 cells transfecting T7-tagged mouse BNAS2, using BNAS2 polyclonal antibody (Cat # PAB8489) . Lane 1: extracts, lane 2: extracts immunoprecipitated with rabbit IgG and lane 3: extracts immunoprecipitated with mouse BNAS2 polyclonal antibody.

- Immunocytochemistry

- Immunoprecipitation

Publication Reference

- [Identification and characterization of a novel BASH N terminus-associated protein, BNAS2.](#)

Imamura Y, Katahira T, Kitamura D.

The Journal of Biological Chemistry 2004 Jun; 279(25):26425.

Application: IF, WB, Monkey, Mouse, BAL17, COS-7 cells

- [The B cell-restricted adaptor BASH is required for normal development and antigen receptor-mediated activation of B cells.](#)

Hayashi K, Nittono R, Okamoto N, Tsuji S, Hara Y, Goitsuka R, Kitamura D.

PNAS 2000 Mar; 97(6):2755.

Application: WB-Ce, Mouse, B cells, Spleen cells