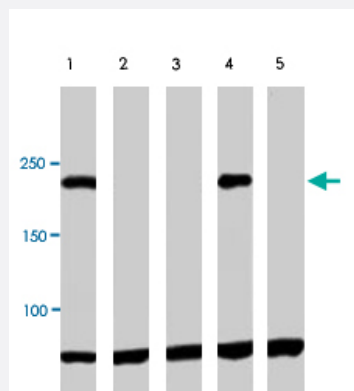


SMARCA2 polyclonal antibody

Catalog # PAB8486

Size 25 ug

Applications



Western Blot

Western blot analysis of extract from MDA-MB-435 cells (lane 1) , SW-13 cells (lane 2) , vector transgenic cell SW-13 cells (lane3) , Brm transgenic cell SW-13 cells (lane 4) and BRG1 transgenic cell SW-13 cells (lane 5) , using SMARCA2 polyclonal antibody (Cat # PAB8486) .

Specification

Product Description Rabbit polyclonal antibody raised against synthetic peptide of SMARCA2.

Immunogen A synthetic peptide corresponding to human SMARCA2.

Host Rabbit

Reactivity Human

Form Liquid

Quality Control Testing Antibody Reactive Against Synthetic Peptide.

Recommend Usage Western Blot (1-3 ug/mL)
Immunoprecipitation (3 ug/mL)
The optimal working dilution should be determined by the end user.

Storage Buffer In PBS (0.1% proclin, 2.0% Block Ace)

Storage Instruction Store at -20°C.
Aliquot to avoid repeated freezing and thawing.

Applications

- Western Blot

Western blot analysis of extract from MDA-MB-435 cells (lane 1) , SW-13 cells (lane 2) , vector transgenic cell SW-13 cells (lane3) , Brm transgenic cell SW-13 cells (lane 4) and BRG1 transgenic cell SW-13 cells (lane 5) , using SMARCA2 polyclonal antibody (Cat # PAB8486) .

- Immunoprecipitation

Gene Info — SMARCA2

Entrez GeneID	6595
Gene Name	SMARCA2
Gene Alias	BAF190, BRM, FLJ36757, MGC74511, SNF2, SNF2L2, SNF2LA, SWI2, Sth1p, hBRM, hSNF2a
Gene Description	SWI/SNF related, matrix associated, actin dependent regulator of chromatin, subfamily a, member 2
Omim ID	600014
Gene Ontology	Hyperlink
Gene Summary	The protein encoded by this gene is a member of the SWI/SNF family of proteins and is highly similar to the brahma protein of Drosophila. Members of this family have helicase and ATPase activities and are thought to regulate transcription of certain genes by altering the chromatin structure around those genes. The encoded protein is part of the large ATP-dependent chromatin remodeling complex SNF/SWI, which is required for transcriptional activation of genes normally repressed by chromatin. Two transcript variants encoding different isoforms have been found for this gene, which contains a trinucleotide repeat (CAG) length polymorphism. [provided by RefSeq]
Other Designations	OTTHUMP00000020970 OTTHUMP00000020971 SNF2-alpha SNF2-like 2 SNF2/SWI2-like protein 2 SWI/SNF-related matrix-associated actin-dependent regulator of chromatin a2 global transcription activator homologous sequence sucrose nonfermenting 2-like protein 2

Publication Reference

- [SWI/SNF chromatin remodelling complex and retroviral gene silencing.](#)

Iba H, Mizutani T, Ito T.

Reviews in Medical Virology 2003 Mar; 13(2):99.

Application: WB, Human, Mammalian cells

- [SW13 cells can transition between two distinct subtypes by switching expression of BRG1 and Brm genes at the post-transcriptional level.](#)

Yamamichi-Nishina M, Ito T, Mizutani T, Yamamichi N, Watanabe H, Iba H.

The Journal of Biological Chemistry 2003 Feb; 278(9):7422.

Application: WB-Ce, WB-Tr, Human, SW13, MDA-MB435 cells

- [Maintenance of integrated proviral gene expression requires Brm, a catalytic subunit of SWI/SNF complex.](#)

Mizutani T, Ito T, Nishina M, Yamamichi N, Watanabe A, Iba H.

The Journal of Biological Chemistry 2002 May; 277(18):15859.

- [SWI/SNF chromatin remodeling and cancer.](#)

Klochender-Yeivin A, Muchardt C, Yaniv M.

Current Opinion in Genetics & Development 2002 Feb; 12(1):73.

Application: IHC, WB, Human, Lung cancers, Prostate cancers

- [The Swi/Snf family nucleosome-remodeling complexes and transcriptional control.](#)

Sudarsanam P, Winston F.

Trends in Genetics 2000 Aug; 16(8):345.

Application: WB-Ce, WB-Tr, Human, Mammalian cells

Disease

- [Breast cancer](#)
- [Breast Neoplasms](#)
- [Schizophrenia](#)
- [Tobacco Use Disorder](#)