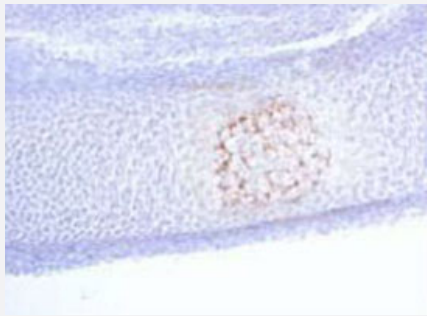


Mgp polyclonal antibody

Catalog # PAB8484 Size 50 ug

Applications



Immunohistochemistry

Immunohistochemical analysis of mouse embryo tissue, using Mgp polyclonal antibody (Cat # PAB8484) .

Specification

Product Description Rabbit polyclonal antibody raised against synthetic peptide of Mgp.

Immunogen A synthetic peptide corresponding to mouse Mgp.

Host Rabbit

Reactivity Mouse

Form Liquid

Quality Control Testing Antibody Reactive Against Synthetic Peptide.

Recommend Usage Immunohistochemistry (15 ug/mL)
The optimal working dilution should be determined by the end user.

Storage Buffer In PBS (0.1% proclin, 2.0% Block Ace)

Storage Instruction Store at -20°C.
Aliquot to avoid repeated freezing and thawing.

Applications

- Immunohistochemistry

Immunohistochemical analysis of mouse embryo tissue, using Mgp polyclonal antibody (Cat # PAB8484) .

Gene Info — Mgp

Entrez GeneID	17313
---------------	-----------------------

Gene Name	Mgp
-----------	-----

Gene Alias	Mglap
------------	-------

Gene Description	matrix Gla protein
------------------	--------------------

Gene Ontology	Hyperlink
---------------	---------------------------

Other Designations	matrix gamma-carboxyglutamate (gla) protein
--------------------	---------------------------------------------

Publication Reference

- [Arterial calcification: a review of mechanisms, animal models, and the prospects for therapy.](#)

Wallin R, Wajih N, Greenwood GT, Sane DC.

Medicinal Research Reviews 2001 Jul; 21(4):274.

- [Matrix Gla protein is differentially expressed during the deposition of a calcified matrix by vascular pericytes.](#)

Canfield AE, Doherty MJ, Kelly V, Newman B, Farrington C, Grant ME, Boot-Handford RP.

FEBS Letters 2000 Dec; 487(2):267.

Application: IHC, WB-Ce, Bovine, Pericytes, Chondrocytes