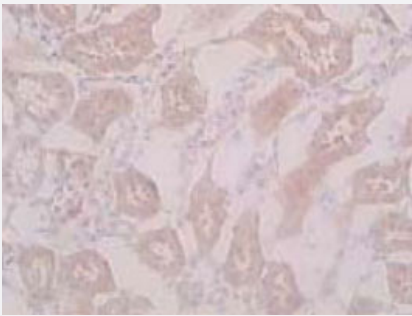


Slc7a11 polyclonal antibody

Catalog # PAB8451 Size 25 ug

Applications



Immunohistochemistry (Frozen sections)

Immunohistochemical analysis of mouse kidney tissue, using Slc7a11 polyclonal antibody (Cat # PAB8451) .

Specification

Product Description Rabbit polyclonal antibody raised against synthetic peptide of Slc7a11.

Immunogen A synthetic peptide corresponding to mouse Slc7a11.

Host Rabbit

Reactivity Mouse

Form Liquid

Quality Control Testing Antibody Reactive Against Synthetic Peptide.

Recommend Usage Immunohistochemistry (5 ug/mL)
Western Blot (1 ug/mL)
The optimal working dilution should be determined by the end user.

Storage Buffer In PBS (0.1% proclin, 2.0% Block Ace)

Storage Instruction Store at -20°C.
Aliquot to avoid repeated freezing and thawing.

Applications

- Western Blot
- Immunohistochemistry (Frozen sections)

Immunohistochemical analysis of mouse kidney tissue, using Slc7a11 polyclonal antibody (Cat # PAB8451) .

Gene Info — Slc7a11

Entrez GeneID	26570
Gene Name	Slc7a11
Gene Alias	9930009M05Rik, A1451155, sut, xCT
Gene Description	solute carrier family 7 (cationic amino acid transporter, y+ system), member 11
Gene Ontology	Hyperlink
Gene Summary	y+ system)
Other Designations	OTTMUSP00000023507 amino acid transport system xc- cystine/glutamate transporter cystine/ glutamate transporter sodium independent anionic amino acid transport system

Publication Reference

- [Human cystine/glutamate transporter: cDNA cloning and upregulation by oxidative stress in glioma cells.](#)

Kim JY, Kanai Y, Chairoungdua A, Cha SH, Matsuo H, Kim DK, Inatomi J, Sawa H, Ida Y, Endou H.

Biochimica et Biophysica Acta 2001 Jun; 1512(2):335.

Application: WB-Ce, WB-Tr, Human, U87 cells