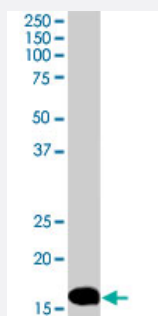


STMN1 (phospho S25) polyclonal antibody

Catalog # PAB8195

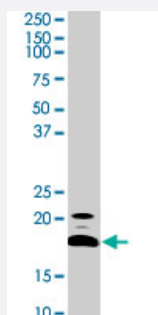
Size 100 uL

Applications



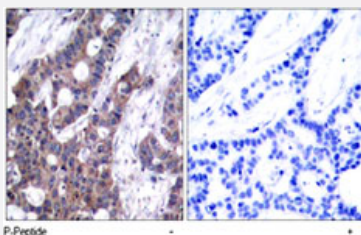
Western Blot (Tissue lysate)

Phospho-STMN1 Ser24 polyclonal antibody. Western blot analysis of STMN1 expression in rat brain.



Western Blot (Cell lysate)

Phospho-STMN1 Ser24 polyclonal antibody. Western blot analysis of STMN1 expression in HeLa.



Immunohistochemistry (Formalin/PFA-fixed paraffin-embedded sections)

Immunohistochemical analysis of paraffin-embedded human breast carcinoma tissue using STMN1 (phospho S25) polyclonal antibody (Cat # PAB8195).

Specification

Product Description

Rabbit polyclonal antibody raised against synthetic phosphopeptide of STMN1.

Immunogen

Synthetic phosphopeptide corresponding to residues surrounding S25 of human STMN1.

Host	Rabbit
Theoretical MW (kDa)	19
Reactivity	Human, Mouse, Rat
Form	Liquid
Purification	Immunoaffinity purification
Concentration	1 mg/mL
Quality Control Testing	Antibody Reactive Against Synthetic Peptide.
Recommend Usage	Immunohistochemistry (1:50-1:100) Western Blot (1:500-1:1000) The optimal working dilution should be determined by the end user.
Storage Buffer	In PBS (without Mg^{2+} and Ca^{2+}), 150 mM NaCl, pH 7.4 (50% glycerol, 0.02% sodium azide)
Storage Instruction	Store at -20°C. Aliquot to avoid repeated freezing and thawing.
Note	This product contains sodium azide: a POISONOUS AND HAZARDOUS SUBSTANCE which should be handled by trained staff only.

Applications

- Western Blot (Tissue lysate)

Phospho-STMN1 Ser24 polyclonal antibody. Western blot analysis of STMN1 expression in rat brain.

[Protocol Download](#)

- Western Blot (Cell lysate)

Phospho-STMN1 Ser24 polyclonal antibody. Western blot analysis of STMN1 expression in Hela.

[Protocol Download](#)

- Western Blot

- Immunohistochemistry (Formalin/PFA-fixed paraffin-embedded sections)

Immunohistochemical analysis of paraffin-embedded human breast carcinoma tissue using STMN1 (phospho S25) polyclonal antibody (Cat # PAB8195).

Gene Info — STMN1

Entrez GeneID	3925
Gene Name	STMN1
Gene Alias	LAP18, Lag, OP18, PP17, PP19, PR22, SMN
Gene Description	stathmin 1/oncoprotein 18
Omim ID	151442
Gene Ontology	Hyperlink
Gene Summary	This gene belongs to the stathmin family of genes. It encodes a ubiquitous cytosolic phosphoprotein proposed to function as an intracellular relay integrating regulatory signals of the cellular environment. The encoded protein is involved in the regulation of the microtubule filament system by destabilizing microtubules. It prevents assembly and promotes disassembly of microtubules. Multiple transcript variants encoding different isoforms have been found for this gene. [provided by RefSeq]
Other Designations	OTTHUMP00000008527 OTTHUMP00000008528 OTTHUMP00000008530 leukemia-associated phosphoprotein p18 metablastin oncoprotein 18 phosphoprotein 19 prolin stathmin 1

Publication Reference

- [Comparative phosphoproteomic analysis of checkpoint recovery identifies new regulators of the DNA damage response.](#)

Halim VA, Alvarez-Fernandez M, Xu YJ, Aprelia M, van den Toorn HW, Heck AJ, Mohammed S, Medema RH.
Science Signaling 2013 Apr; 6(272):rs9.

Application: WB-Ce, Human, U-2 OS cells

Pathway

- [MAPK signaling pathway](#)

Disease

- [Anorexia Nervosa](#)
- [Bulimia](#)

- [Genetic Predisposition to Disease](#)
- [Startle Reaction](#)