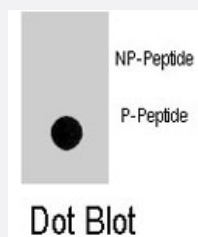


NOMO1 (phospho S1205) polyclonal antibody

Catalog # PAB8173

Size 400 uL

Applications



Dot Blot (Peptide)

Dot blot analysis of NOMO1 (phospho S1205) polyclonal antibody (Cat # PAB8173) on nitrocellulose membrane. 50 ng of Phospho-peptide or Non Phospho-peptide per dot were adsorbed. Antibody working concentrations are 0.5 ug/mL.

Specification

Product Description	Rabbit polyclonal antibody raised against synthetic phosphopeptide of NOMO1.
Immunogen	Synthetic phosphopeptide (conjugated with KLH) corresponding to residues surrounding S1205 of human NOMO1.
Host	Rabbit
Reactivity	Human
Form	Liquid
Purification	Protein A purification
Recommend Usage	ELISA (1:1000) Dot Blot (1:500) The optimal working dilution should be determined by the end user.
Storage Buffer	In PBS (0.09% sodium azide)
Storage Instruction	Store at 4°C. For long term storage store at -20°C. Aliquot to avoid repeated freezing and thawing.

Note

This product contains sodium azide: a POISONOUS AND HAZARDOUS SUBSTANCE which should be handled by trained staff only.

Applications

- Enzyme-linked Immunoabsorbent Assay
- Dot Blot (Peptide)

Dot blot analysis of NOMO1 (phospho S1205) polyclonal antibody (Cat # PAB8173) on nitrocellulose membrane. 50 ng of Phospho-peptide or Non Phospho-peptide per dot were adsorbed. Antibody working concentrations are 0.5 ug/mL.

Gene Info — NOMO1

Entrez GeneID [23420](#)

Protein Accession# [NP_055102;Q15155](#)

Gene Name NOMO1

Gene Alias Nomo, PM5

Gene Description NODAL modulator 1

Omim ID [609157](#)

Gene Ontology [Hyperlink](#)

Gene Summary This gene encodes a protein originally thought to be related to the collagenase gene family. This gene is one of three highly similar genes in a region of duplication located on the p arm of chromosome 16. These three genes encode closely related proteins that may have the same function. The protein encoded by one of these genes has been identified as part of a protein complex that participates in the Nodal signaling pathway during vertebrate development. Mutations in ABCC6, which is located nearby, rather than mutations in this gene are associated with pseudoxanthoma elasticum (PXE). [provided by RefSeq]

Other Designations nodal modulator 1|pM5 protein, telomeric copy

Publication Reference

- [Genomic analysis of mouse retinal development.](#)

Blackshaw S, Harpavat S, Trimarchi J, Cai L, Huang H, Kuo WP, Weber G, Lee K, Fraioli RE, Cho SH, Yung R, Asch E, Ohno-Machado L, Wong WH, Cepko CL.

PLoS Biology 2004 Jun; 2(9):E247.