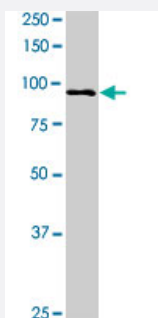


LEO1 (phospho S551) polyclonal antibody

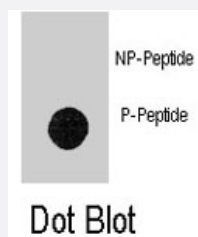
Catalog # PAB8172 Size 400 uL

Applications



Western Blot (Cell lysate)

LEO1 (phospho S551) polyclonal antibody (Cat # PAB8172). Western blot analysis of LEO1 expression in Jurkat.



Dot Blot (Peptide)

Dot blot analysis of LEO1 (phospho S551) polyclonal antibody (Cat # PAB8172) on nitrocellulose membrane. 50 ng of Phospho-peptide or Non Phospho-peptide per dot were adsorbed. Antibody working concentrations are 0.5 ug/mL.

Specification

Product Description	Rabbit polyclonal antibody raised against synthetic phosphopeptide of LEO1.
Immunogen	Synthetic phosphopeptide (conjugated with KLH) corresponding to residues surrounding S551 of human LEO1.
Host	Rabbit
Reactivity	Human
Form	Liquid
Purification	Protein A purification

Recommend Usage	ELISA (1:1000) Dot Blot (1:500) The optimal working dilution should be determined by the end user.
Storage Buffer	In PBS (0.09% sodium azide)
Storage Instruction	Store at 4°C. For long term storage store at -20°C. Aliquot to avoid repeated freezing and thawing.
Note	This product contains sodium azide: a POISONOUS AND HAZARDOUS SUBSTANCE which should be handled by trained staff only.

Applications

- Western Blot (Cell lysate)

LEO1 (phospho S551) polyclonal antibody (Cat # PAB8172). Western blot analysis of LEO1 expression in Jurkat.

[Protocol Download](#)

- Enzyme-linked Immunoabsorbent Assay

- Dot Blot (Peptide)

Dot blot analysis of LEO1 (phospho S551) polyclonal antibody (Cat # PAB8172) on nitrocellulose membrane. 50 ng of Phospho-peptide or Non Phospho-peptide per dot were adsorbed. Antibody working concentrations are 0.5 ug/mL.

Gene Info — LEO1

Entrez GeneID	123169
Protein Accession#	Q8WVC0;NP_620147
Gene Name	LEO1
Gene Alias	RDL
Gene Description	Leo1, Paf1/RNA polymerase II complex component, homolog (S. cerevisiae)
Omim ID	610507
Gene Ontology	Hyperlink
Gene Summary	LEO1, parafibromin (CDC73; MIM 607393), CTR9 (MIM 609366), and PAF1 (MIM 610506) form the PAF protein complex that associates with the RNA polymerase II subunit POLR2A (MIM 180660) and with a histone methyltransferase complex (Rozenblatt-Rosen et al., 2005 [PubMed 15632063]).[supplied by OMIM]

Other Designations

Leo1, Paf1/RNA polymerase II complex component, homolog|replicative senescence downregulated leo1-like|senescence downregulated leo1-like

Publication Reference

- [Expression of the Leo1-like domain of replicative senescence down-regulated Leo1-like \(RDL\) protein promotes senescence of 2BS fibroblasts.](#)

Zhao L, Tong T, Zhang Z.

FASEB Journal 2005 Apr; 19(6):521.