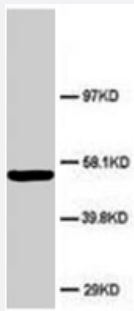


# ABI1 polyclonal antibody

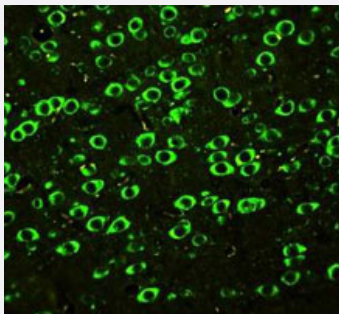
Catalog # PAB7947      Size 100 ug

## Applications



### Western Blot (Tissue lysate)

Western blot analysis of rat brain tissue lysate. Using ABI1 polyclonal antibody (Cat # PAB7947) .



### Immunofluorescence

Immunofluorescence analysis of paraffin-embedded rat brain tissue sections, staining ABI1 in cytoplasm by SABC-FITC.

## Specification

Product Description	Rabbit polyclonal antibody raised against synthetic peptide of ABI1.
Immunogen	A synthetic peptide corresponding to amino acids at C-terminus of human ABI1.
Host	Rabbit
Theoretical MW (kDa)	55.1
Reactivity	Human, Mouse, Rat
Form	Lyophilized
Purification	Affinity purification

Isotype	IgG
Recommend Usage	Western Blot (1-2 ug/mL) Immunohistochemistry (Formalin/PFA-fixed paraffin-embedded sections) (0.5-1 ug/mL) Immunohistochemistry (Frozen sections) (0.5-1 ug/mL) Immunocytochemistry (0.5-1 ug/mL) The optimal working dilution should be determined by the end user.
Storage Buffer	Lyophilized from 0.9 mg NaCl, 0.2 mg Na <sub>2</sub> HPO <sub>4</sub> (5 mg BSA, 0.05 mg sodium azide, 0.05 mg Thimerosal)
Storage Instruction	Store at -20°C on dry atmosphere. After reconstitution with 200 uL of deionized water and concentration will be 500 ug/mL, store at -20°C or lower. Aliquot to avoid repeated freezing and thawing.
Note	This product contains sodium azide and thimerosal: POISONOUS AND HAZARDOUS SUBSTANCE which should be handled by trained staff only.

## Applications

- Western Blot (Tissue lysate)

Western blot analysis of rat brain tissue lysate. Using ABI1 polyclonal antibody (Cat # PAB7947) .

- Immunofluorescence

Immunofluorescence analysis of paraffin-embedded rat brain tissue sections, staining ABI1 in cytoplasm by SABC-FITC.

## Gene Info — ABI1

Entrez GeneID	<a href="#">10006</a>
Gene Name	ABI1
Gene Alias	ABI-1, E3B1, NAP1BP, SSH3BP, SSH3BP1
Gene Description	abl-interactor 1
Omim ID	<a href="#">603050</a>
Gene Ontology	<a href="#">Hyperlink</a>

## Gene Summary

The protein encoded by this gene has been found to form a complex with EPS8 and SOS1, and is thought to be involved in the transduction of signals from Ras to Rac. In addition, the encoded protein may play a role in the regulation of EGF-induced Erk pathway activation as well as cytoskeletal reorganization and EGFR signaling. Several transcript variants encoding multiple isoforms have been found for this gene. [provided by RefSeq]

## Other Designations

Abelson interactor 1|Abl-interactor protein 1 long|OTTHUMP00000019352|OTTHUMP00000019355|eps8 binding protein|interactor protein AblBP4|nap1 binding protein|spectrin SH3 domain binding protein 1

## Publication Reference

- [Alphall-spectrin participates in the surface expression of cell adhesion molecule L1 and neurite outgrowth.](#)

Trinh-Trang-Tan MM, Bigot S, Picot J, Lecomte MC, Kordeli E.

Experimental Cell Research 2014 Apr; 322(2):365.

Application: WB-Tr, Human, SH-SY5Y cells

- [Nav2 hypomorphic mutant mice are ataxic and exhibit abnormalities in cerebellar development.](#)

McNeill EM, Klockner-Bormann M, Roesler EC, Talton LE, Moechars D, Clagett-Dame M.

Developmental Biology 2011 May; 353(2):331.

Application: IHC, Mouse, Brain

- [Abl interactor 1 promotes tyrosine 296 phosphorylation of mammalian enabled \(Mena\) by c-Abl kinase.](#)

Tani K, Sato S, Sukezane T, Kojima H, Hirose H, Hanafusa H, Shishido T.

The Journal of Biological Chemistry 2003 Jun; 278(24):21685.

Application: IF, Mouse, Fibroblasts

- [ABI-1, a human homolog to mouse Abl-interactor 1, fuses the MLL gene in acute myeloid leukemia with t\(10;11\)\(p11.2;q23\).](#)

Taki T, Shibuya N, Taniwaki M, Hanada R, Morishita K, Bessho F, Yanagisawa M, Hayashi Y.

Blood 1998 Aug; 92(4):1125.

## Disease

- [Alzheimer Disease](#)
- [Genetic Predisposition to Disease](#)
- [Kidney Failure](#)