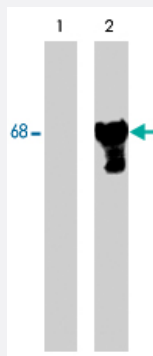


Pxn (phospho S83) polyclonal antibody

Catalog # PAB7932

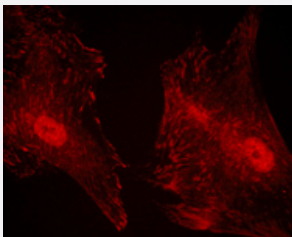
Size 100 uL

Applications



Western Blot (Cell lysate)

Western blot analysis of PC-12 cells untreated (lane 1) or treated with NGF (200 ng/ml) for 60 min (lane 2). The blots were probed with Pxn (phospho S83) polyclonal antibody (Cat # PAB7932).



Immunofluorescence

Immunocytochemical labeling of Pxn (phospho S83) polyclonal antibody (Cat # PAB7932) in rabbit spleen fibroblasts. The cells were labeled with Pxn (phospho S83) polyclonal antibody (Cat # PAB7932) (right) , then detected using appropriate secondary antibodies conjugated to Cy3.

Specification

Product Description	Rabbit polyclonal antibody raised against synthetic phosphopeptide of Pxn.
Immunogen	Synthetic phosphopeptide (conjugated with KLH) corresponding to residues surrounding S83 of mouse Pxn.
Host	Rabbit
Reactivity	Mouse, Rat
Specificity	This sequence is highly conserved in rat paxillin and is also found in all isoforms (a, b, g) of paxillin.
Form	Liquid

Quality Control Testing	Antibody Reactive Against Synthetic Peptide.
Recommend Usage	ELISA (1:2000) Immunocytochemistry (1:10) Western Blot (1:1000) The optimal working dilution should be determined by the end user.
Storage Buffer	In PBS (50% glycerol, 1 mg/mL BSA, 0.05% sodium azide)
Storage Instruction	Store at -20°C. Aliquot to avoid repeated freezing and thawing.
Note	This product contains sodium azide: a POISONOUS AND HAZARDOUS SUBSTANCE which should be handled by trained staff only.

Applications

- Western Blot (Cell lysate)

Western blot analysis of PC-12 cells untreated (lane 1) or treated with NGF (200 ng/ml) for 60 min (lane 2). The blots were probed with Pxn (phospho S83) polyclonal antibody (Cat # PAB7932).

- Immunocytochemistry

- Immunofluorescence

Immunocytochemical labeling of Pxn (phospho S83) polyclonal antibody (Cat # PAB7932) in rabbit spleen fibroblasts. The cells were labeled with Pxn (phospho S83) polyclonal antibody (Cat # PAB7932) (right), then detected using appropriate secondary antibodies conjugated to Cy3.

- Enzyme-linked Immunoabsorbent Assay

Gene Info — Pxn

Entrez GeneID	19303
Gene Name	Pxn
Gene Alias	AW108311, AW123232
Gene Description	paxillin
Gene Ontology	Hyperlink
Other Designations	OTTMUSP00000015574 OTTMUSP00000015575

Publication Reference

- [Defining blood-induced microglia functions in neurodegeneration through multiomic profiling.](#)

Andrew S Mendiola, Zhaoqi Yan, Karuna Dixit, Jeffrey R Johnson, Mehdi Bouhaddou, Anke Meyer-Franke, Min-Gyoung Shin, Yu Yong, Ayushi Agrawal, Eilidh MacDonald, Gayathri Muthukumar, Clairice Pearce, Nikhita Arun, Belinda Cabriga, Rosa Meza-Acevedo, Maria Del Pilar S Alzamora, Scott S Zamvil, Alexander R Pico, Jae Kyu Ryu, Nevan J Krogan, Katerina Akassoglou.

Nature Immunology 2023 Jul; 24(7):1173.

Application: IF, Mouse, Mouse bone-marrow- derived macrophages (BMDMs)

- [Paxillin serves as an ERK-regulated scaffold for coordinating FAK and Rac activation in epithelial morphogenesis.](#)

Ishibe S, Joly D, Liu ZX, Cantley LG.

Molecular Cell 2004 Oct; 16(2):257.

Application: IF, IP, WB, Mouse, mIMCD-3 cells

- [Phosphorylation of paxillin by p38MAPK is involved in the neurite extension of PC-12 cells.](#)

Huang C, Borchers CH, Schaller MD, Jacobson K.

The Journal of Cell Biology 2004 Feb; 164(4):593.