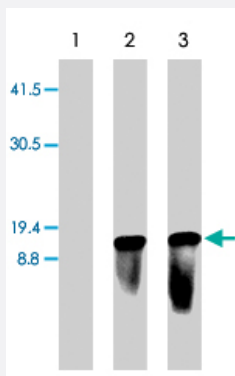


Aspergillus Terrus Blastocidin S Deaminase polyclonal antibody

Catalog # PAB7931

Size 100 uL

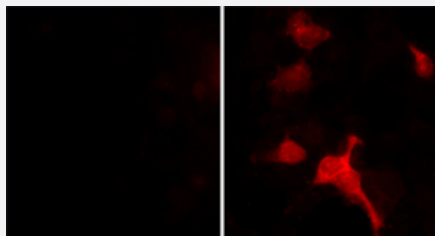
Applications



Western Blot (Transfected lysate)

Western blot of 293 cells mock transfected (lane 1) or transiently transfected with pLenti6/TR lentiviral vector (lanes 2 & 3). Blots were probed with Blastocidin S Deaminase polyclonal antibody (Cat # PAB7931) (lanes 1-3). Molecular weight (MW) standards show that Blastocidin S Deaminase is expressed as a 13 kDa band in only the transfected cells.

Immunofluorescence



Immunocytochemical labeling of Blastocidin S Deaminase in 293 cells mock transfected (left) and transiently transfected with pLenti6/TR lentiviral vector (right). The cells were labeled with Blastocidin S Deaminase polyclonal antibody (Cat # PAB7931) and detected using appropriate secondary antibody conjugated to Texas Red. (Images provided by Charles Mashburn and Dr. George Smith at the University of Kentucky, Spinal Cord and Brain Injury Research Center).

Specification

Product Description	Rabbit polyclonal antibody raised against synthetic peptide of <i>Aspergillus Terrus</i> Blastocidin S Deaminase.
Immunogen	A synthetic peptide (conjugated with KLH) corresponding to N-terminus of <i>Aspergillus Terrus</i> Blastocidin S Deaminase.
Host	Rabbit
Reactivity	Fungi

Specificity	<p>This antibody was affinity purified using the N-terminal Bsd peptide (without carrier). The antibody detects a 13 kDa* protein corresponding to the molecular mass of Bsd on SDS-PAGE immunoblots of 293 cells transfected with a lentiviral vector that expresses the Bsd gene product, but is not detected in mock transfected cells.</p> <p>*All molecular weights (MW) are confirmed by comparison to Bio-Rad Rainbow Markers and to western blot mobilities of known proteins with similar MW.</p>
Form	Liquid
Recommend Usage	<p>ELISA (1:2000)</p> <p>Immunocytochemistry (1:100)</p> <p>Western Blot (1:1000)</p> <p>The optimal working dilution should be determined by the end user.</p>
Storage Buffer	In PBS (50% glycerol, 1 mg/mL BSA, 0.05% sodium azide).
Storage Instruction	<p>Store at -20°C.</p> <p>Aliquot to avoid repeated freezing and thawing.</p>
Note	This product contains sodium azide: a POISONOUS AND HAZARDOUS SUBSTANCE which should be handled by trained staff only.

Applications

- Western Blot (Transfected lysate)

Western blot of 293 cells mock transfected (lane 1) or transiently transfected with pLenti6/TR lentiviral vector (lanes 2 & 3). Blots were probed with Blastocidin S Deaminase polyclonal antibody (Cat # PAB7931) (lanes 1-3). Molecular weight (MW) standards show that Blastocidin S Deaminase is expressed as a 13 KDa band in only the transfected cells.

- Immunofluorescence

Immunocytochemical labeling of Blastocidin S Deaminase in 293 cells mock transfected (left) and transiently transfected with pLenti6/TR lentiviral vector (right). The cells were labeled with Blastocidin S Deaminase polyclonal antibody (Cat # PAB7931) and detected using appropriate secondary antibody conjugated to Texas Red. (Images provided by Charles Mashburn and Dr. George Smith at the University of Kentucky, Spinal Cord and Brain Injury Research Center).

- Enzyme-linked Immunoabsorbent Assay

Publication Reference

- [Blastocidin S deaminase gene from *Aspergillus terreus* \(BSD\): a new drug resistance gene for transfection of mammalian cells.](#)

Kimura M, Takatsuki A, Yamaguchi I.

Biochimica et Biophysica Acta 1994 Nov; 1219(3):653.

- [Blasticidin S-resistance gene \(bsr\): a novel selectable marker for mammalian cells.](#)

Izumi M, Miyazawa H, Kamakura T, Yamaguchi I, Endo T, Hanaoka F.

Experimental Cell Research 1991 Dec; 197(2):229.