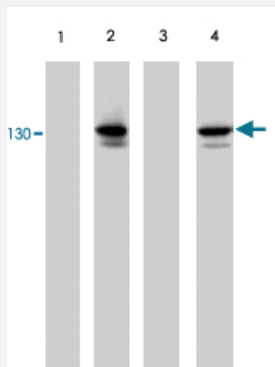


# CDH2 (phospho Y820) polyclonal antibody

Catalog # PAB7930      Size 100 uL

## Applications



### Western Blot (Cell lysate)

Western blot of human endothelial cells untreated (lane 1) or treated with pervanadate (1 mM) for 30 min (lanes 2, 3 & 4). The blots were probed with CDH2 (phospho Y820) polyclonal antibody (Cat # PAB7930). The latter antibody was used in the presence of no peptide (lane 2), phospho-CDH2 (Tyr-820) peptide (lane 3), or phospho-CDH2 (Tyr-860) peptide (lane 4).

## Specification

<b>Product Description</b>	Rabbit polyclonal antibody raised against synthetic phosphopeptide of CDH2.
<b>Immunogen</b>	Synthetic phosphopeptide corresponding to residues surrounding Y820 of human CDH2.
<b>Host</b>	Rabbit
<b>Reactivity</b>	Human, Mouse, Rat
<b>Specificity</b>	This sequence is conserved in rat and mouse N-cadherin, and has three amino acid differences from the conserved site in R-cadherin.
<b>Form</b>	Liquid
<b>Quality Control Testing</b>	Antibody Reactive Against Synthetic Peptide.
<b>Recommend Usage</b>	ELISA (1:2000) Western Blot (1:1000) The optimal working dilution should be determined by the end user.
<b>Storage Buffer</b>	In PBS (50% glycerol, 1 mg/mL BSA, 0.05% sodium azide)

**Storage Instruction**

Store at -20°C.  
Aliquot to avoid repeated freezing and thawing.

**Note**

This product contains sodium azide: a POISONOUS AND HAZARDOUS SUBSTANCE which should be handled by trained staff only.

## Applications

- Western Blot (Cell lysate)

Western blot of human endothelial cells untreated (lane 1) or treated with pervanadate (1 mM) for 30 min (lanes 2, 3 & 4). The blots were probed with CDH2 (phospho Y820) polyclonal antibody (Cat # PAB7930). The latter antibody was used in the presence of no peptide (lane 2), phospho-CDH2 (Tyr-820) peptide (lane 3), or phospho-CDH2 (Tyr-860) peptide (lane 4).

- Enzyme-linked Immunoabsorbent Assay

## Gene Info — CDH2

**Entrez GeneID**[1000](#)**Gene Name**

CDH2

**Gene Alias**

CD325, CDHN, CDw325, NCAD

**Gene Description**

cadherin 2, type 1, N-cadherin (neuronal)

**Omim ID**[114020](#)**Gene Ontology**[Hyperlink](#)**Gene Summary**

This gene is a classical cadherin from the cadherin superfamily. The encoded protein is a calcium dependent cell-cell adhesion glycoprotein comprised of five extracellular cadherin repeats, a trans membrane region and a highly conserved cytoplasmic tail. The protein functions during gastrulation and is required for establishment of left-right asymmetry. At certain central nervous system synapses, presynaptic to postsynaptic adhesion is mediated at least in part by this gene product. [provided by RefSeq]

**Other Designations**

N-cadherin 1|cadherin 2, N-cadherin (neuronal)|cadherin 2, type 1|calcium-dependent adhesion protein, neuronal|neural cadherin

## Publication Reference

- [Involvement of Src family kinases in N-cadherin phosphorylation and beta-catenin dissociation during transendothelial migration of melanoma cells.](#)

Qi J, Wang J, Romanyuk O, Siu CH.

Molecular Biology of the Cell 2005 Dec; 17(3):1261.

- [Identification of cadherin tyrosine residues that are phosphorylated and mediate Shc association.](#)

Xu Y, Carpenter G.

Journal of Cellular Biochemistry 1999 Nov; 75(2):264.

## Pathway

- [Arrhythmogenic right ventricular cardiomyopathy \(ARVC\)](#)
- [Cell adhesion molecules \(CAMs\)](#)

## Disease

- [Cleft Lip](#)
- [Cleft Palate](#)
- [Esophageal Neoplasms](#)
- [Genetic Predisposition to Disease](#)
- [Head and Neck Neoplasms](#)
- [Laryngeal Neoplasms](#)
- [Mouth Neoplasms](#)
- [Pharyngeal Neoplasms](#)
- [Tobacco Use Disorder](#)
- [Tooth Abnormalities](#)