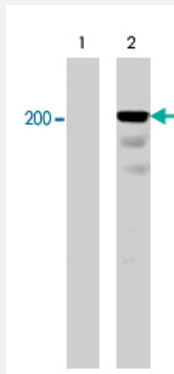


# ITGB4 (phospho Y1526) polyclonal antibody

Catalog # PAB7916

Size 100 uL

## Applications



### Western Blot (Cell lysate)

Western blot analysis of A-431 cells serum starved overnight (lane 1) and treated with pervanadate (1mM) for 30 min (lane 2). The blots were probed with ITGB4 (phospho Y1526) polyclonal antibody (Cat # PAB7916).

## Specification

<b>Product Description</b>	Rabbit polyclonal antibody raised against synthetic phosphopeptide of ITGB4.
<b>Immunogen</b>	Synthetic phosphopeptide (conjugated with KLH) corresponding to residues surrounding Y1526 of human ITGB4.
<b>Host</b>	Rabbit
<b>Reactivity</b>	Human, Mouse, Rat
<b>Specificity</b>	This peptide sequence is found in all three integrin-b4 isoforms and is highly conserved in rat and mouse integrin-b4.
<b>Form</b>	Liquid
<b>Quality Control Testing</b>	Antibody Reactive Against Synthetic Peptide.
<b>Recommend Usage</b>	ELISA (1:2000) Western Blot (1:1000) The optimal working dilution should be determined by the end user.
<b>Storage Buffer</b>	In PBS (50% glycerol, 1 mg/mL BSA, 0.05% sodium azide)

**Storage Instruction**

Store at -20°C.  
Aliquot to avoid repeated freezing and thawing.

**Note**

This product contains sodium azide: a POISONOUS AND HAZARDOUS SUBSTANCE which should be handled by trained staff only.

## Applications

- Western Blot (Cell lysate)

Western blot analysis of A-431 cells serum starved overnight (lane 1) and treated with pervanadate (1mM) for 30 min (lane 2). The blots were probed with ITGB4 (phospho Y1526) polyclonal antibody (Cat # PAB7916).

- Enzyme-linked Immunoabsorbent Assay

## Gene Info — ITGB4

**Entrez GeneID**[3691](#)**Gene Name**

ITGB4

**Gene Alias**

CD104

**Gene Description**

integrin, beta 4

**Omim ID**[131800](#) [147557](#) [226650](#) [226730](#)**Gene Ontology**[Hyperlink](#)**Gene Summary**

Integrins are heterodimers comprised of alpha and beta subunits, that are noncovalently associated transmembrane glycoprotein receptors. Different combinations of alpha and beta polypeptides form complexes that vary in their ligand-binding specificities. Integrins mediate cell-matrix or cell-cell adhesion, and transduced signals that regulate gene expression and cell growth. This gene encodes the integrin beta 4 subunit, a receptor for the laminins. This subunit tends to associate with alpha 6 subunit and is likely to play a pivotal role in the biology of invasive carcinoma. Mutations in this gene are associated with epidermolysis bullosa with pyloric atresia. Multiple alternatively spliced transcript variants encoding distinct isoforms have been found for this gene. [provided by RefSeq]

**Other Designations**

CD104 antigen|GP150|integrin beta 4|integrin beta-4 subunit

## Publication Reference

- [Identification of insulin receptor substrate 1 \(IRS-1\) and IRS-2 as signaling intermediates in the alpha6beta4 integrin-dependent activation of phosphoinositide 3-OH kinase and promotion of invasion.](#)

Shaw LM.

Molecular and Cellular Biology 2001 Aug; 21(15):5082.

- [Tyrosine phosphorylation of the beta 4 integrin cytoplasmic domain mediates Shc signaling to extracellular signal-regulated kinase and antagonizes formation of hemidesmosomes.](#)

Dans M, Gagnoux-Palacios L, Blaikie P, Klein S, Mariotti A, Giancotti FG.

J Biol Chem 2001 Jan; 276(2):1494.

## Pathway

- [Arrhythmogenic right ventricular cardiomyopathy \(ARVC\)](#)
- [ECM-receptor interaction](#)
- [Focal adhesion](#)
- [Hypertrophic cardiomyopathy \(HCM\)](#)
- [Regulation of actin cytoskeleton](#)

## Disease

- [Breast cancer](#)
- [Breast Neoplasms](#)
- [Cardiovascular Diseases](#)
- [Diabetes Mellitus](#)
- [Edema](#)
- [Genetic Predisposition to Disease](#)