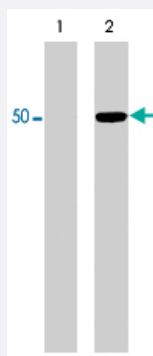


# TUBB3 (phospho S172) polyclonal antibody

Catalog # PAB7903

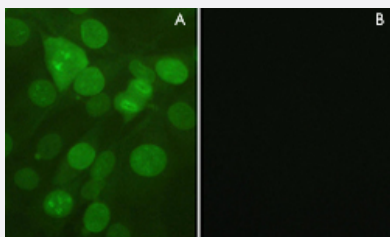
Size 100 uL

## Applications



### Western Blot (Tissue lysate)

Western blot analysis of purified human brain tubulin untreated (lane 1) or treated with ERK2 kinase to phosphorylate Ser-172 (lane 2). The blot was probed with TUBB3 (phospho S172) polyclonal antibody (Cat # PAB7903).



### Immunofluorescence

Immunocytochemical labeling in C2C12 cells using TUBB3 (phospho S172) polyclonal antibody (Cat # PAB7903) (A). The specificity of the binding for the latter antibody was demonstrated by using the antibody in the presence of TUBB3 (phospho S172) polyclonal antibody (Cat # PAB7903) (B).

## Specification

### Product Description

Rabbit polyclonal antibody raised against synthetic phosphopeptide of TUBB3.

### Immunogen

Synthetic phosphopeptide (conjugated with KLH) corresponding to residues surrounding S172 of human TUBB3.

### Host

Rabbit

### Reactivity

Chicken, Human, Mouse, Rat

### Specificity

This sequence is identical to similar regions in  $\beta$ 1,  $\beta$ 11, and  $\beta$ 11L-tubulin isotypes, and is well conserved in tubulins from most eukaryotic species.

Form	Liquid
Quality Control Testing	Antibody Reactive Against Synthetic Peptide.
Recommend Usage	ELISA (1:2000) Immunocytochemistry (1:100) Western Blot (1:1000) The optimal working dilution should be determined by the end user.
Storage Buffer	In PBS (50% glycerol, 1 mg/mL BSA, 0.05% sodium azide)
Storage Instruction	Store at -20°C. Aliquot to avoid repeated freezing and thawing.
Note	This product contains sodium azide: a POISONOUS AND HAZARDOUS SUBSTANCE which should be handled by trained staff only.

## Applications

- Western Blot (Tissue lysate)

Western blot analysis of purified human brain tubulin untreated (lane 1) or treated with ERK2 kinase to phosphorylate Ser-172 (lane 2). The blot was probed with TUBB3 (phospho S172) polyclonal antibody (Cat # PAB7903).

- Immunocytochemistry

- Immunofluorescence

Immunocytochemical labeling in C2C12 cells using TUBB3 (phospho S172) polyclonal antibody (Cat # PAB7903) (A). The specificity of the binding for the latter antibody was demonstrated by using the antibody in the presence of TUBB3 (phospho S172) polyclonal antibody (Cat # PAB7903) (B).

- Enzyme-linked Immunoabsorbent Assay

## Gene Info — TUBB3

Entrez GeneID	<a href="#">10381</a>
Gene Name	TUBB3
Gene Alias	MC1R, TUBB4, beta-4
Gene Description	tubulin, beta 3
Omim ID	<a href="#">602661</a>

Gene Ontology	<a href="#">Hyperlink</a>
Gene Summary	O
Other Designations	tubulin, beta, 4

## Publication Reference

- [Microtubule regulation in mitosis: tubulin phosphorylation by the cyclin-dependent kinase Cdk1.](#)  
Fourest-Lieuvin A, Peris L, Gache V, Garcia-Saez I, Juillan-Binard C, Lantéz V, Job D.  
Molecular Biology of the Cell 2005 Dec; 17(3):1041.
- [Post-translational modifications regulate microtubule function.](#)  
Westermann S, Weber K.  
Nature Reviews. Molecular Cell Biology 2003 Dec; 4(12):938.
- [Expression of unphosphorylated class III beta-tubulin isotype in neuroepithelial cells demonstrates neuroblast commitment and differentiation.](#)  
Fanarraga ML, Avila J, Zabala JC.  
The European Journal of Neuroscience 1999 Feb; 11(2):517.

## Pathway

- [Gap junction](#)
- [Pathogenic Escherichia coli infection - EHEC](#)