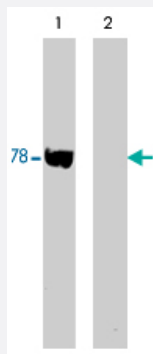


WASF2 polyclonal antibody

Catalog # PAB7889

Size 100 uL

Applications



Western Blot (Cell lysate)

Western blot of rat PC-12 lysate. The blots were probed with WASF2 polyclonal antibody (Cat # PAB7889) in the presence (lane 2) or absence (lane 1) of WAVE2 (Central region) blocking peptide.

Specification

Product Description	Rabbit polyclonal antibody raised against synthetic peptide of WASF2.
Immunogen	A synthetic peptide (conjugated with KLH) corresponding to internal region of human WASF2.
Host	Rabbit
Reactivity	Human, Mouse, Rat
Specificity	This sequence has high homology with similar regions in rat and mouse WAVE2, and has low homology to similar regions in WAVE1 and WAVE3.
Form	Liquid
Quality Control Testing	Antibody Reactive Against Synthetic Peptide.
Recommend Usage	ELISA (1:2000) Western Blot (1:500) The optimal working dilution should be determined by the end user.
Storage Buffer	In PBS (50% glycerol, 1 mg/mL BSA, 0.05% sodium azide)

Storage Instruction

Store at -20°C.
Aliquot to avoid repeated freezing and thawing.

Note

This product contains sodium azide: a POISONOUS AND HAZARDOUS SUBSTANCE which should be handled by trained staff only.

Applications

- Western Blot (Cell lysate)

Western blot of rat PC-12 lysate. The blots were probed with WASF2 polyclonal antibody (Cat # PAB7889) in the presence (lane 2) or absence (lane 1) of WAVE2 (Central region) blocking peptide.

- Enzyme-linked Immunoabsorbent Assay

Gene Info — WASF2

Entrez GeneID [10163](#)

Gene Name WASF2

Gene Alias SCAR2, WAVE2, dJ393P12.2

Gene Description WAS protein family, member 2

Omim ID [605875](#)

Gene Ontology [Hyperlink](#)

Gene Summary

This gene encodes a member of the Wiskott-Aldrich syndrome protein family. The gene product is a protein that forms a multiprotein complex that links receptor kinases and actin. Binding to actin occurs through a C-terminal verprolin homology domain in all family members. The multiprotein complex serves to transduce signals that involve changes in cell shape, motility or function. The published map location (PMID:10381382) has been changed based on recent genomic sequence comparisons, which indicate that the expressed gene is located on chromosome 1, and a pseudogene may be located on chromosome X. [provided by RefSeq]

Other Designations IMD2|OTTHUMP00000003471|WASP family Verprolin-homologous protein 2|suppressor of cyclic-AMP receptor (WASP-family)

Publication Reference

- [Abelson-interactor-1 promotes WAVE2 membrane translocation and Abelson-mediated tyrosine phosphorylation required for WAVE2 activation.](#)

Leng Y, Zhang J, Badour K, Arpaia E, Freeman S, Cheung P, Siu M, Siminovitch K.

PNAS 2005 Jan; 102(4):1098.

- [Crystal growth of carbonate apatite using a CaCO₃ flux.](#)

Suetsugu Y, Tanaka J.

Journal of Materials Science. Materials in Medicine 1999 Sep; 10(9):561.

Pathway

- [Adherens junction](#)
- [Fc gamma R-mediated phagocytosis](#)
- [Regulation of actin cytoskeleton](#)