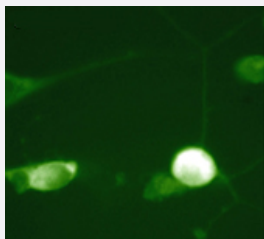


CFL1 polyclonal antibody

Catalog # PAB7882 Size 100 uL

Applications



Immunofluorescence

Immunocytochemical labeling in chick dorsal root ganglion neurons using CFL1 polyclonal antibody (Cat # PAB7882) . (Images provided by Dr. Diane Snow, Department of Anatomy & Neurobiology, University of Kentucky).

Specification

Product Description	Rabbit polyclonal antibody raised against synthetic peptide of CFL1.
Immunogen	A synthetic peptide (conjugated with KLH) corresponding to N-terminus of human CFL1.
Host	Rabbit
Reactivity	Human, Mouse, Rat
Specificity	This sequence has 100% homology with similar regions of rat and mouse Cofilin 1, and has 3 amino acid differences from human Cofilin 2.
Form	Liquid
Quality Control Testing	Antibody Reactive Against Synthetic Peptide.
Recommend Usage	ELISA (1:2000) Immunocytochemistry (1:50) Western Blot (1:1000) The optimal working dilution should be determined by the end user.
Storage Buffer	In PBS (50% glycerol, 1 mg/mL BSA, 0.05% sodium azide)

Storage Instruction

Store at -20°C.
Aliquot to avoid repeated freezing and thawing.

Note

This product contains sodium azide: a POISONOUS AND HAZARDOUS SUBSTANCE which should be handled by trained staff only.

Applications

- Western Blot

- Immunofluorescence

Immunocytochemical labeling in chick dorsal root ganglion neurons using CFL1 polyclonal antibody (Cat # PAB7882) . (Images provided by Dr. Diane Snow, Department of Anatomy & Neurobiology, University of Kentucky).

- Enzyme-linked Immunoabsorbent Assay

Gene Info — CFL1

Entrez GeneID[1072](#)**Protein Accession#**[P23528](#)**Gene Name**

CFL1

Gene Alias

CFL

Gene Description

cofilin 1 (non-muscle)

Omim ID[601442](#)**Gene Ontology**[Hyperlink](#)**Gene Summary**

Cofilin is a widely distributed intracellular actin-modulating protein that binds and depolymerizes filamentous F-actin and inhibits the polymerization of monomeric G-actin in a pH-dependent manner. It is involved in the translocation of actin-cofilin complex from cytoplasm to nucleus.[supplied by OMIM]

Other Designations

-

Publication Reference

- [The ADF/cofilin family: actin-remodeling proteins.](#)

Maciver SK, Hussey PJ.

Genome Biology 2002 Apr; 3(5):reviews300.

Application: WB, Human, Mammalian cells

- [Proteins of the ADF/cofilin family: essential regulators of actin dynamics.](#)

Bamburg JR.

Annual Review of Cell and Developmental Biology 1999 Nov; 15:185.

Pathway

- [Axon guidance](#)
- [Fc gamma R-mediated phagocytosis](#)
- [Regulation of actin cytoskeleton](#)

Disease

- [Spinal Dysraphism](#)