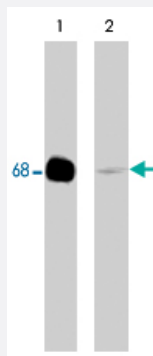


PXN polyclonal antibody

Catalog # PAB7873 Size 100 uL

Applications



Western Blot (Cell lysate)

Western blot analysis of A-431 cells. The blot was probed with rabbit PXN polyclonal antibody (Cat # PAB7873) at 1:500 (lane 1) & 1:2000 (lane 2).

Specification

Product Description	Rabbit polyclonal antibody raised against synthetic peptide of PXN.
Immunogen	A synthetic peptide (conjugated with KLH) corresponding to C-terminus of human PXN.
Host	Rabbit
Reactivity	Human, Mouse, Rat
Specificity	This peptide sequence is highly conserved in rat and mouse paxillins, and is found in all three paxillin isoforms (a, b, and g).
Form	Liquid
Quality Control Testing	Antibody Reactive Against Synthetic Peptide.
Recommend Usage	ELISA (1:2000) Western Blot (1:500) The optimal working dilution should be determined by the end user.
Storage Buffer	In PBS (50% glycerol, 1 mg/mL BSA, 0.05% sodium azide)

Storage Instruction

Store at -20°C.
Aliquot to avoid repeated freezing and thawing.

Note

This product contains sodium azide: a POISONOUS AND HAZARDOUS SUBSTANCE which should be handled by trained staff only.

Applications

- Western Blot (Cell lysate)

Western blot analysis of A-431 cells. The blot was probed with rabbit PXN polyclonal antibody (Cat # PAB7873) at 1:500 (lane 1) & 1:2000 (lane 2).

- Enzyme-linked Immunoabsorbent Assay

Gene Info — PXN

Entrez GeneID	5829
---------------	----------------------

Protein Accession#	P49023
--------------------	------------------------

Gene Name	PXN
-----------	-----

Gene Alias	FLJ16691
------------	----------

Gene Description	paxillin
------------------	----------

Omim ID	602505
---------	------------------------

Gene Ontology	Hyperlink
---------------	---------------------------

Other Designations	-
--------------------	---

Publication Reference

- [A role for JNK-paxillin signaling in cell migration.](#)

Huang C, Jacobson K, Schaller MD.

Cell Cycle 2004 Jan; 3(1):4.

- [Ras-induced serine phosphorylation of the focal adhesion protein paxillin is mediated by the Raf-->MEK-->ERK pathway.](#)

Woodrow MA, Woods D, Cherwinski HM, Stokoe D, McMahon M.

Experimental Cell Research 2003 Jul; 287(2):325.

Application: IF, IP, WB, Mouse, NIH/3T3 cells

- [JNK phosphorylates paxillin and regulates cell migration.](#)

Huang C, Rajfur Z, Borchers C, Schaller MD, Jacobson K.

Nature 2003 Jul; 424(6945):219.

Application: WB-Tr, Human, HEK 293, MDA-MB-231 cells

Pathway

- [Chemokine signaling pathway](#)
- [Focal adhesion](#)
- [Leukocyte transendothelial migration](#)
- [Regulation of actin cytoskeleton](#)
- [VEGF signaling pathway](#)

Disease

- [Carcinoma](#)
- [Lung Neoplasms](#)