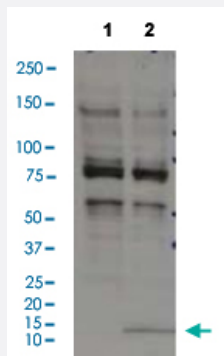


SARS-CoV E polyclonal antibody

Catalog # PAB7813

Size 100 ug

Applications



Western Blot (Transfected lysate)

Western Blot analysis of Lane 1: 293 cell extract control and Lane 2: 293 cell expressing E (SARS-CoV).

Specification

Product Description	Rabbit polyclonal antibody raised against SARS-CoV E.
Immunogen	In vivo expressed glycosylated full-length envelope protein (E) of SARS-CoV (Beijing02) (GenBank accession # AY278487).
Host	Rabbit
Reactivity	SARS-CoV
Specificity	Reacts with E (SARS-CoV).
Form	Liquid
Purification	Immunoaffinity chromatography
Isotype	IgG
Recommend Usage	ELISA Western Blot (1:200-1:1000) The optimal working dilution should be determined by the end user.
Storage Buffer	In PBS (0.1% gelatin, 0.09% sodium azide).

Storage Instruction

Store at 4°C. For long term storage store at -20°C.
Aliquot to avoid repeated freezing and thawing.

Note

This product contains sodium azide: a POISONOUS AND HAZARDOUS SUBSTANCE which should be handled by trained staff only.

Applications

- Western Blot (Transfected lysate)

Western Blot analysis of Lane 1: 293 cell extract control and Lane 2: 293 cell expressing E (SARS-CoV).

- Enzyme-linked Immunoabsorbent Assay