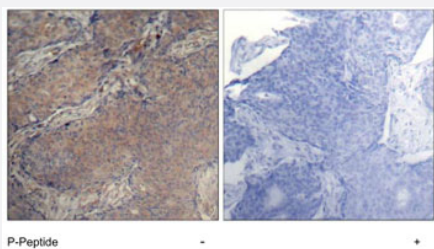


MYL12A (phospho S19) polyclonal antibody

Catalog # PAB7729 Size 100 uL

Applications



Immunohistochemistry (Formalin/PFA-fixed paraffin-embedded sections)

Immunohistochemical analysis of paraffin-embedded human breast carcinoma tissue, using MYL12A (phospho S19) polyclonal antibody (Cat # PAB7729).

Specification

Product Description	Rabbit polyclonal antibody raised against synthetic phosphopeptide of MYL12A.
Immunogen	Synthetic phosphopeptide corresponding to residues surrounding S19 of human MYL12A.
Sequence	RPQRATSNVFAMF
Host	Rabbit
Theoretical MW (kDa)	18
Reactivity	Human, Mouse, Rat
Form	Liquid
Purification	Affinity chromatography
Concentration	1 mg/mL
Recommend Usage	Immunohistochemistry (1:50-1:100) Western Blot (1:500-1:1000) The optimal working dilution should be determined by the end user.
Storage Buffer	In PBS (without Mg^{2+} and Ca^{2+}), 150 mM NaCl, pH 7.4 (50% glycerol, 0.02% sodium azide).

Storage Instruction

Store at 4°C for short term. For long term storage, store at -20°C.
Aliquot to avoid repeated freezing and thawing.

Note

This product contains sodium azide: a POISONOUS AND HAZARDOUS SUBSTANCE which should be handled by trained staff only.

Applications

- Western Blot
- Immunohistochemistry (Formalin/PFA-fixed paraffin-embedded sections)
Immunohistochemical analysis of paraffin-embedded human breast carcinoma tissue, using MYL12A (phospho S19) polyclonal antibody (Cat # PAB7729).

Gene Info — MYL12A

Entrez GeneID [10627](#)

Protein Accession# [P19105](#)

Gene Name MYL12A

Gene Alias MLCB, MRCL3, MRLC3, MYL2B

Gene Description myosin light chain 12A

Gene Ontology [Hyperlink](#)

Other Designations myosin light chain 12A

Pathway

- [Focal adhesion](#)
- [Leukocyte transendothelial migration](#)
- [Regulation of actin cytoskeleton](#)
- [Tight junction](#)