

EIF4G1 polyclonal antibody

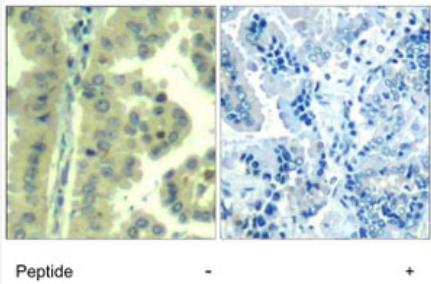
Catalog # PAB7699 Size 100 uL

Applications



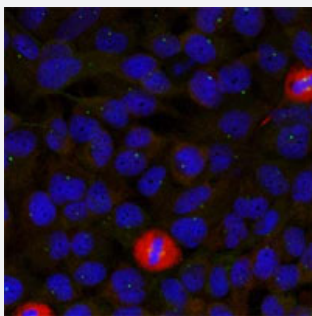
Western Blot (Cell lysate)

Western blot analysis of extract from 293 cells, using EIF4G1 polyclonal antibody (Cat # PAB7699).



Immunohistochemistry (Formalin/PFA-fixed paraffin-embedded sections)

Immunohistochemical analysis of paraffin-embedded human lung carcinoma tissue, using EIF4G1 polyclonal antibody (Cat # PAB7699).



Immunofluorescence

Immunofluorescence staining of methanol-fixed HeLa cells using EIF4G1 polyclonal antibody (Cat # PAB7699).

Specification

Product Description

Rabbit polyclonal antibody raised against synthetic peptide of EIF4G1.

Immunogen

A synthetic peptide corresponding to residues surrounding S1232 of human EIF4G1.

Host	Rabbit
Theoretical MW (kDa)	220
Reactivity	Human
Form	Liquid
Purification	Immunoaffinity purification
Concentration	1 mg/mL
Quality Control Testing	Antibody Reactive Against Synthetic Peptide.
Recommend Usage	Western Blot (1:500-1:1000) Immunohistochemistry (1:50-1:100) The optimal working dilution should be determined by the end user.
Storage Buffer	In PBS (without Mg^{2+} and Ca^{2+}), 150 mM NaCl, pH 7.4 (50% glycerol, 0.02% sodium azide)
Storage Instruction	Store at -20°C. Aliquot to avoid repeated freezing and thawing.
Note	This product contains sodium azide: a POISONOUS AND HAZARDOUS SUBSTANCE which should be handled by trained staff only.

Applications

- Western Blot (Cell lysate)

Western blot analysis of extract from 293 cells, using EIF4G1 polyclonal antibody (Cat # PAB7699).

- Immunohistochemistry (Formalin/PFA-fixed paraffin-embedded sections)

Immunohistochemical analysis of paraffin-embedded human lung carcinoma tissue, using EIF4G1 polyclonal antibody (Cat # PAB7699).

- Immunofluorescence

Immunofluorescence staining of methanol-fixed HeLa cells using EIF4G1 polyclonal antibody (Cat # PAB7699).

Gene Info — EIF4G1

Entrez GeneID	1981
Protein Accession#	Q04637
Gene Name	EIF4G1

Gene Alias	DKFZp686A1451, EIF4F, EIF4G, p220
Gene Description	eukaryotic translation initiation factor 4 gamma, 1
Omim ID	600495
Gene Ontology	Hyperlink
Gene Summary	The protein encoded by this gene is a component of the protein complex EIF4F, which is involved in the recognition of the mRNA cap, ATP-dependent unwinding of 5'-terminal secondary structure, and recruitment of mRNA to the ribosome. Alternative splicing results in five transcript variants encoding four distinct isoforms. [provided by RefSeq]
Other Designations	EIF4-gamma