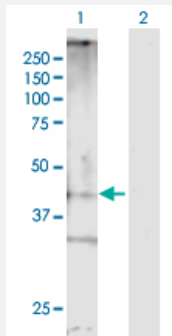


# EV71 VP1 polyclonal antibody

Catalog # PAB7630-B01P

Size 50 ug

## Applications



### Western Blot (Transfected lysate)

Western Blot analysis of EV71-VP1 expression in transfected 293T cell line by EV71-VP1 MaxPab polyclonal antibody.

Lane 1: EV71-VP1 transfected lysate(33.44 KDa).

Lane 2: Non-transfected lysate.

## Specification

<b>Product Description</b>	Mouse polyclonal antibody raised against EV71 VP1 protein.
<b>Immunogen</b>	EV71 VP1 (1 a.a. ~ 297 a.a) full-length human protein.
<b>Host</b>	Mouse
<b>Reactivity</b>	Viruses
<b>Form</b>	Liquid
<b>Quality Control Testing</b>	Antibody reactive against mammalian transfected lysate.
<b>Recommend Usage</b>	The optimal working dilution should be determined by the end user.
<b>Storage Buffer</b>	In PBS, pH 7.4
<b>Storage Instruction</b>	Store at -20°C or lower. Aliquot to avoid repeated freezing and thawing.

## Applications

- Western Blot (Transfected lysate)

Western Blot analysis of EV71-VP1 expression in transfected 293T cell line by EV71-VP1 MaxPab polyclonal antibody.

Lane 1: EV71-VP1 transfected lysate(33.44 KDa).

Lane 2: Non-transfected lysate.

[Protocol Download](#)

- Detection Antibody

## Publication Reference

- [Evaluation of the virucidal effects of rosmarinic acid against enterovirus 71 infection via in vitro and in vivo study.](#)

Lin WY, Yu YJ, Jinn TR.

Virology Journal 2019 Jul; 16(1):94.

Application: WB, Human, RD cells

- [Clinically isolated enterovirus A71 subgenogroup C4 strain with lethal pathogenicity in 14-day-old mice and the application as an EV-A71 mouse infection model.](#)

Xu Y, Ma S, Zhu L, Huang Z, Chen L, Xu Y, Yin H, Peng T, Wang Y.

American Journal of Translational Research 2016 Nov; 137:67.

Application: IHC, WB, Viruses, EV-A71-infected KM Mouse tissues, including skeletal muscle, heart, intestine, liver, kidney, spleen, lung, and brain. Vero cells

- [The C-Terminus of the Core  \$\beta\$ -Ladder domain in Japanese Encephalitis Virus Nonstructural Protein 1 Is Flexible for Accommodation of Heterologous Epitope Fusion.](#)

Yen LC, Liao JT, Lee HJ, Chou WY, Chen CW, Lin YL, Liao CL.

Journal of Virology 2015 Nov; 90(3):1178.

Application: WB-Ce, Mouse, BHK-21 cells

- [Japanese encephalitis virus replicon-based vaccine expressing enterovirus-71 epitope confers dual protection from lethal challenges.](#)

Huang YT, Liao JT, Yen LC, Chang YK, Lin YL, Liao CL.

Journal of Biomedical Science 2015 Sep; 22(1):74.

Application: WB-Tr, Mosquito, JCprME cells