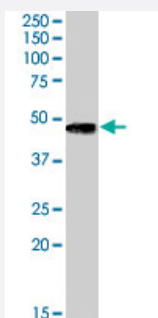


# TOM1L1 polyclonal antibody

Catalog # PAB7610

Size 100 ug

## Applications



### Western Blot (Tissue lysate)

TOM1L1 polyclonal antibody (Cat # PAB7610) (0.3 ug/mL) staining of human brain (cerebellum) lysate (35 ug protein in RIPA buffer). Primary incubation was 1 hour. Detected by chemiluminescence.

## Specification

**Product Description** Goat polyclonal antibody raised against synthetic peptide of TOM1L1.

**Immunogen** A synthetic peptide corresponding to human TOM1L1.

**Sequence** C-EQNKNQKEATNTTSE

**Host** Goat

**Theoretical MW (kDa)** 53

**Reactivity** Human

**Form** Liquid

**Purification** Antigen affinity purification

**Concentration** 0.5 mg/mL

**Quality Control Testing** Antibody Reactive Against Synthetic Peptide.

**Recommend Usage**  
 ELISA (1:64000)  
 Western Blot (0.3-1 ug/mL)  
 The optimal working dilution should be determined by the end user.

Storage Buffer	In Tris saline, pH 7.3 (0.5% BSA, 0.02% sodium azide)
Storage Instruction	Store at -20°C. Aliquot to avoid repeated freezing and thawing.
Note	This product contains sodium azide: a POISONOUS AND HAZARDOUS SUBSTANCE which should be handled by trained staff only.

## Applications

- Western Blot (Tissue lysate)

TOM1L1 polyclonal antibody (Cat # PAB7610) (0.3 ug/mL) staining of human brain (cerebellum) lysate (35 ug protein in RIPA buffer). Primary incubation was 1 hour. Detected by chemiluminescence.

- Enzyme-linked Immunoabsorbent Assay

## Gene Info — TOM1L1

Entrez GeneID	<a href="#">10040</a>
Protein Accession#	<a href="#">NP_005477.1</a>
Gene Name	TOM1L1
Gene Alias	OK/KNS-CL.3, SRCASM
Gene Description	target of myb1 (chicken)-like 1
Omim ID	<a href="#">604701</a>
Gene Ontology	<a href="#">Hyperlink</a>
Other Designations	Src activating and signaling molecule target of myb 1-like 1 target of myb1-like 1

## Publication Reference

- [Srcasm overexpression in psoriasis-insights into pathogenesis.](#)

Pulitzer M, Li W, Hanson M, Singh F, Elenitsas R, Gelfand JM, VanVoorhees A, Seykora JT.  
Journal of Cutaneous Pathology 2007 Feb; 34(2):160.

Application: WB-Ti, Human, Human psoriatic, non-psoriatic epidermis