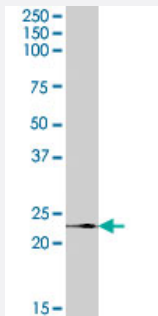


RPL17 polyclonal antibody

Catalog # PAB7601 Size 100 ug

Applications



Western Blot (Tissue lysate)

RPL17 polyclonal antibody (Cat # PAB7601) (0.3 ug/mL) staining of human prostate lysate (35 ug protein in RIPA buffer). Primary incubation was 1 hour. Detected by chemiluminescence.

Specification

Product Description	Goat polyclonal antibody raised against synthetic peptide of RPL17.
Immunogen	A synthetic peptide corresponding to human RPL17.
Sequence	RYSLDAPENPTKSC
Host	Goat
Theoretical MW (kDa)	21.4
Reactivity	Human
Specificity	Both reported variants represent identical protein (NP_000976.1; NP_001030178.1).
Form	Liquid
Purification	Antigen affinity purification
Concentration	0.5 mg/mL
Quality Control Testing	Antibody Reactive Against Synthetic Peptide.

Recommend Usage	ELISA (1:32000) Western Blot (0.3-1 ug/mL) The optimal working dilution should be determined by the end user.
Storage Buffer	In Tris saline, pH 7.3 (0.5% BSA, 0.02% sodium azide)
Storage Instruction	Store at -20°C. Aliquot to avoid repeated freezing and thawing.
Note	This product contains sodium azide: a POISONOUS AND HAZARDOUS SUBSTANCE which should be handled by trained staff only.

Applications

- Western Blot (Tissue lysate)

RPL17 polyclonal antibody (Cat # PAB7601) (0.3 ug/mL) staining of human prostate lysate (35 ug protein in RIPA buffer). Primary incubation was 1 hour. Detected by chemiluminescence.

- Enzyme-linked Immunoabsorbent Assay

Gene Info — RPL17

Entrez GeneID	6139
Protein Accession#	NP_000976.1;NP_001030178.1
Gene Name	RPL17
Gene Alias	FLJ92089, MGC117162, rpL23
Gene Description	ribosomal protein L17
Omim ID	603661
Gene Ontology	Hyperlink
Gene Summary	Ribosomes, the organelles that catalyze protein synthesis, consist of a small 40S subunit and a large 60S subunit. Together these subunits are composed of 4 RNA species and approximately 80 structurally distinct proteins. This gene encodes a ribosomal protein that is a component of the 60S subunit. The protein belongs to the L22P family of ribosomal proteins. It is located in the cytoplasm. This gene has been referred to as rpL23 because the encoded protein shares amino acid identity with ribosomal protein L23 from <i>Halobacterium marismortui</i> ; however, its official symbol is RPL17. Two alternative splice variants have been observed, each encoding the same protein. As is typical for genes encoding ribosomal proteins, there are multiple processed pseudogenes of this gene dispersed through the genome. [provided by RefSeq]

Other Designations

60S ribosomal protein L17|gene encoding putative NFkB activating protein

Publication Reference

- [Enhanced gene expression in the forebrain of hatchling and juvenile male zebra finches.](#)

Wade J, Tang YP, Peabody C, Tempelman RJ.

Journal of Neurobiology 2005 Aug; 64(2):224.

Pathway

- [Ribosome](#)