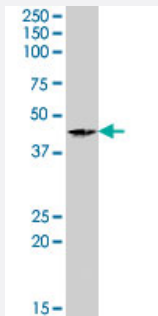


# RASSF8 polyclonal antibody

Catalog # PAB7597

Size 100 ug

## Applications



### Western Blot (Tissue lysate)

RASSF8 polyclonal antibody (Cat # PAB7597) (0.3 ug/mL) staining of human testis lysate (35 ug protein in RIPA buffer). Primary incubation was 1 hour. Detected by chemiluminescence.

## Specification

**Product Description** Goat polyclonal antibody raised against synthetic peptide of RASSF8.

**Immunogen** A synthetic peptide corresponding to human RASSF8.

**Sequence** C-RDTERHLAPHEN

**Host** Goat

**Theoretical MW (kDa)** 45.4

**Reactivity** Human

**Form** Liquid

**Purification** Antigen affinity purification

**Concentration** 0.5 mg/mL

**Quality Control Testing** Antibody Reactive Against Synthetic Peptide.

**Recommend Usage**  
ELISA (1:128000)  
Western Blot (0.3-1 ug/mL)  
The optimal working dilution should be determined by the end user.

Storage Buffer	In Tris saline, pH 7.3 (0.5% BSA, 0.02% sodium azide)
Storage Instruction	Store at -20°C. Aliquot to avoid repeated freezing and thawing.
Note	This product contains sodium azide: a POISONOUS AND HAZARDOUS SUBSTANCE which should be handled by trained staff only.

## Applications

- Western Blot (Tissue lysate)

RASSF8 polyclonal antibody (Cat # PAB7597) (0.3 ug/mL) staining of human testis lysate (35 ug protein in RIPA buffer). Primary incubation was 1 hour. Detected by chemiluminescence.

- Enzyme-linked Immunoabsorbent Assay

## Gene Info — RASSF8

Entrez GeneID	<a href="#">11228</a>
Protein Accession#	<a href="#">NP_009142.2</a>
Gene Name	RASSF8
Gene Alias	C12orf2, HoJ-1
Gene Description	Ras association (RalGDS/AF-6) domain family (N-terminal) member 8
Omim ID	<a href="#">608231</a>
Gene Ontology	<a href="#">Hyperlink</a>
Other Designations	Ras association (RalGDS/AF-6) domain family 8 carcinoma associated HOJ-1

## Publication Reference

- [Common polymorphisms in D12S1034 flanking genes RASSF8 and BHLHB3 are not associated with lung adenocarcinoma risk.](#)

Falvella FS, Spinola M, Manenti G, Conti B, Pastorino U, Skaug V, Haugen A, Dragani TA.

Lung Cancer 2007 Apr; 56(1):1.

## Disease

- [Adenocarcinoma](#)
- [Genetic Predisposition to Disease](#)
- [Lung Neoplasms](#)
- [Tobacco Use Disorder](#)