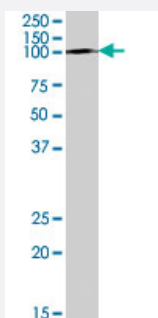


PAM polyclonal antibody

Catalog # PAB7587 Size 100 ug

Applications



Western Blot (Tissue lysate)

PAM polyclonal antibody (Cat # PAB7587) (1 ug/mL) staining of human kidney lysate (35 ug protein in RIPA buffer). Primary incubation was 1 hour. Detected by chemiluminescence.

Specification

Product Description	Goat polyclonal antibody raised against synthetic peptide of PAM.
Immunogen	A synthetic peptide corresponding to human PAM.
Sequence	C-DQEKEDDGSESEE
Host	Goat
Theoretical MW (kDa)	108, 101, 96.3, 98.8
Reactivity	Human
Specificity	This antibody is expected to recognize all reported isoforms (NP_000910.2; NP_620121.1; NP_620176.1 and NP_620177.1).
Form	Liquid
Purification	Antigen affinity purification
Concentration	0.5 mg/mL
Quality Control Testing	Antibody Reactive Against Synthetic Peptide.

Recommend Usage	ELISA (1:4000) Western Blot (0.3-1 ug/mL) The optimal working dilution should be determined by the end user.
Storage Buffer	In Tris saline, pH 7.3 (0.5% BSA, 0.02% sodium azide)
Storage Instruction	Store at -20°C. Aliquot to avoid repeated freezing and thawing.
Note	This product contains sodium azide: a POISONOUS AND HAZARDOUS SUBSTANCE which should be handled by trained staff only.

Applications

- Western Blot (Tissue lysate)

PAM polyclonal antibody (Cat # PAB7587) (1 ug/mL) staining of human kidney lysate (35 ug protein in RIPA buffer). Primary incubation was 1 hour. Detected by chemiluminescence.

- Enzyme-linked Immunoabsorbent Assay

Gene Info — PAM

Entrez GeneID	5066
Protein Accession#	NP_000910.2 ; NP_620121.1 ; NP_620176.1 ; NP_620177.1
Gene Name	PAM
Gene Alias	PAL, PHM
Gene Description	peptidylglycine alpha-amidating monooxygenase
Omim ID	170270
Gene Ontology	Hyperlink
Gene Summary	This gene encodes a multifunctional protein. It has two enzymatically active domains with catalytic activities - peptidylglycine alpha-hydroxylating monooxygenase (PHM) and peptidyl-alpha-hydroxy glycine alpha-amidating lyase (PAL). These catalytic domains work sequentially to catalyze neuro endocrine peptides to active alpha-amidated products. Multiple alternatively spliced transcript variants encoding different isoforms have been described for this gene but some of their full length sequences are not yet known. [provided by RefSeq]
Other Designations	pancreatic peptidylglycine alpha-amidating monooxygenase peptidyl alpha-amidating enzyme peptidyl-alpha-hydroxyglycine alpha-amidating lyase peptidylglycine 2-hydroxylase peptidylglycine alpha-hydroxylating monooxygenase

Publication Reference

- [Human peptidylglycine alpha-amidating monooxygenase: cDNA, cloning and functional expression of a truncated form in COS cells.](#)

Glauder J, Ragg H, Rauch J, Engels JW.

Biochemical and Biophysical Research Communications 1990 Jun; 169(2):551.

Application: WB-Re, Human, Recombinant proteins

Disease

- [Tobacco Use Disorder](#)