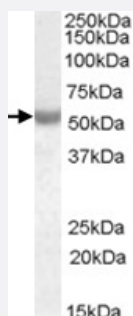


NOVA1 polyclonal antibody

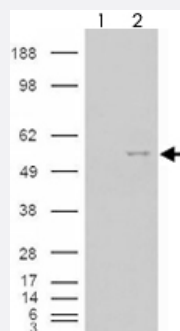
Catalog # PAB7585 Size 100 ug

Applications



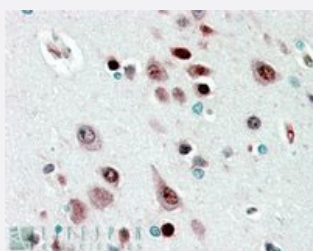
Western Blot (Tissue lysate)

NOVA1 polyclonal antibody (Cat # PAB7585) (0.01 ug/mL) staining of human breast cancer lysate (35 ug protein in RIPA buffer). Primary incubation was 1 hour. Detected by chemiluminescence.



Western Blot (Transfected lysate)

293 overexpressing NOVA1 and probed with NOVA1 polyclonal antibody (Cat # PAB7585) (mock transfection in first lane), tested by Origene.



Immunohistochemistry (Formalin/PFA-fixed paraffin-embedded sections)

NOVA1 polyclonal antibody (Cat # PAB7585) (2.5 ug/mL) staining of paraffin embedded human cerebral cortex. Steamed antigen retrieval with citrate buffer pH 6, AP-staining.

Specification

Product Description

Goat polyclonal antibody raised against synthetic peptide of NOVA1.

Immunogen

A synthetic peptide corresponding to human NOVA1.

Sequence	C-REMPQNVAKTEPVS
Host	Goat
Theoretical MW (kDa)	51.7, 19.5
Reactivity	Human
Specificity	This antibody is expected to recognize all three reported isoforms (NP_002506.2 ; NP_006480.2 ; NP_006482.1).
Form	Liquid
Purification	Antigen affinity purification
Concentration	0.5 mg/mL
Quality Control Testing	Antibody Reactive Against Synthetic Peptide.
Recommend Usage	ELISA (1:64000) Western blot (0.01-0.03 ug/mL) Immunohistochemistry (Formalin/PFA-fixed paraffin-embedded sections) (2-4 ug/mL) The optimal working dilution should be determined by the end user.
Storage Buffer	In Tris saline, pH 7.3 (0.5% BSA, 0.02% sodium azide)
Storage Instruction	Store at -20°C. Aliquot to avoid repeated freezing and thawing.
Note	This product contains sodium azide: a POISONOUS AND HAZARDOUS SUBSTANCE which should be handled by trained staff only.

Applications

- Western Blot (Tissue lysate)

NOVA1 polyclonal antibody (Cat # PAB7585) (0.01 ug/mL) staining of human breast cancer lysate (35 ug protein in RIPA buffer). Primary incubation was 1 hour. Detected by chemiluminescence.

- Western Blot (Transfected lysate)

293 overexpressing NOVA1 and probed with NOVA1 polyclonal antibody (Cat # PAB7585) (mock transfection in first lane), tested by Origene.

- Immunohistochemistry (Formalin/PFA-fixed paraffin-embedded sections)

NOVA1 polyclonal antibody (Cat # PAB7585) (2.5 ug/mL) staining of paraffin embedded human cerebral cortex. Steamed antigen retrieval with citrate buffer pH 6, AP-staining.

- Enzyme-linked Immunoabsorbent Assay

Gene Info — NOVA1

Entrez GeneID [4857](#)

Protein Accession# [NP_002506.2;NP_006480.2;NP_006482.1](#)

Gene Name NOVA1

Gene Alias Nova-1

Gene Description neuro-oncological ventral antigen 1

Omim ID [602157](#)

Gene Ontology [Hyperlink](#)

Gene Summary This gene encodes a neuron-specific RNA-binding protein, a member of the Nova family of paraneoplastic disease antigens, that is recognized and inhibited by paraneoplastic antibodies. These antibodies are found in the sera of patients with paraneoplastic opsoclonus-ataxia, breast cancer, and small cell lung cancer. Alternatively spliced transcripts encoding distinct isoforms have been described. [provided by RefSeq]

Other Designations paraneoplastic Ri antigen|ventral neuron-specific protein 1

Publication Reference

- [Evolution of Nova-dependent splicing regulation in the brain.](#)

Jelen N, Ule J, Zivin M, Darnell RB.

PLoS Genetics 2007 Oct; 3(10):1838.

Application: WB-Ti, Chicken, Mouse, Zebrafish, Brain, liver extract from, chicken, mouse, zebrafish

Disease

- [Cardiovascular Diseases](#)
- [Genetic Predisposition to Disease](#)
- [Parkinson Disease](#)
- [Schizophrenia](#)
- [Ventricular Dysfunction](#)