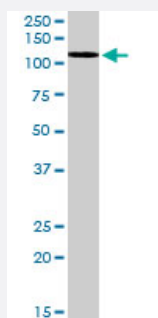


# NPEPPS polyclonal antibody

Catalog # PAB7579

Size 100 ug

## Applications



### Western Blot (Tissue lysate)

NPEPPS polyclonal antibody (Cat # PAB7579) (0.3 ug/mL) staining of human brain (cerebral cortex) lysate (35 ug protein in RIPA buffer). Primary incubation was 1 hour. Detected by chemiluminescence.

## Specification

**Product Description** Goat polyclonal antibody raised against synthetic peptide of NPEPPS.

**Immunogen** A synthetic peptide corresponding to human NPEPPS.

**Sequence** C-KRDAESIHQYLLQRK

**Host** Goat

**Theoretical MW (kDa)** 98.5

**Reactivity** Human

**Form** Liquid

**Purification** Antigen affinity purification

**Concentration** 0.5 mg/mL

**Quality Control Testing** Antibody Reactive Against Synthetic Peptide.

**Recommend Usage**  
 ELISA (1:4000)  
 Western Blot (0.2-0.5 ug/mL)  
 The optimal working dilution should be determined by the end user.

<b>Storage Buffer</b>	In Tris saline, pH 7.3 (0.5% BSA, 0.02% sodium azide)
<b>Storage Instruction</b>	Store at -20°C. Aliquot to avoid repeated freezing and thawing.
<b>Note</b>	This product contains sodium azide: a POISONOUS AND HAZARDOUS SUBSTANCE which should be handled by trained staff only.

## Applications

- Western Blot (Tissue lysate)

NPEPPS polyclonal antibody (Cat # PAB7579) (0.3 ug/mL) staining of human brain (cerebral cortex) lysate (35 ug protein in RIPA buffer). Primary incubation was 1 hour. Detected by chemiluminescence.

- Enzyme-linked Immunoabsorbent Assay

## Gene Info — NPEPPS

<b>Entrez GeneID</b>	<a href="#">9520</a>
<b>Protein Accession#</b>	<a href="#">NP_006301.2</a>
<b>Gene Name</b>	NPEPPS
<b>Gene Alias</b>	MP100, PSA
<b>Gene Description</b>	aminopeptidase puromycin sensitive
<b>Omim ID</b>	<a href="#">606793</a>
<b>Gene Ontology</b>	<a href="#">Hyperlink</a>
<b>Gene Summary</b>	This gene encodes the puromycin-sensitive aminopeptidase, a zinc metallopeptidase which hydrolyzes amino acids from the N-terminus of its substrate. The protein has been localized to both the cytoplasm and to cellular membranes. This enzyme degrades enkephalins in the brain, and studies in mouse suggest that it is involved in proteolytic events regulating the cell cycle. [provided by RefSeq]
<b>Other Designations</b>	metalloproteinase MP100 puromycin-sensitive aminopeptidase

## Publication Reference

- [A genomic screen for modifiers of tauopathy identifies puromycin-sensitive aminopeptidase as an inhibitor of tau-induced neurodegeneration.](#)

Karsten SL, Sang TK, Gehman LT, Chatterjee S, Liu J, Lawless GM, Sengupta S, Berry RW, Pomakian J, Oh HS, Schulz C, Hui KS, Wiedau-Pazos M, Vinters HV, Binder LI, Geschwind DH, Jackson GR.

Neuron 2006 Sep; 51(5):549.