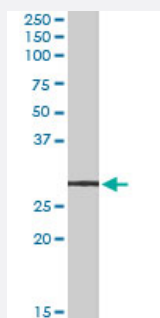


# LYPLAL1 polyclonal antibody

Catalog # PAB7574

Size 100 ug

## Applications



### Western Blot (Tissue lysate)

LYPLAL1 polyclonal antibody (Cat # PAB7574) (0.3 ug/mL) staining of human adipose lysate (35 ug protein in RIPA buffer). Primary incubation was 1 hour. Detected by chemiluminescence.

## Specification

**Product Description** Goat polyclonal antibody raised against synthetic peptide of LYPLAL1.

**Immunogen** A synthetic peptide corresponding to human LYPLAL1.

**Sequence** DRFKITNDCPEHLE

**Host** Goat

**Theoretical MW (kDa)** 26.3

**Reactivity** Human

**Form** Liquid

**Purification** Antigen affinity purification

**Concentration** 0.5 mg/mL

**Quality Control Testing** Antibody Reactive Against Synthetic Peptide.

**Recommend Usage**  
 ELISA (1:16000)  
 Western Blot (0.3-1 ug/mL)  
 The optimal working dilution should be determined by the end user.

Storage Buffer	In Tris saline, pH 7.3 (0.5% BSA, 0.02% sodium azide)
Storage Instruction	Store at -20°C. Aliquot to avoid repeated freezing and thawing.
Note	This product contains sodium azide: a POISONOUS AND HAZARDOUS SUBSTANCE which should be handled by trained staff only.

## Applications

- Western Blot (Tissue lysate)

LYPLAL1 polyclonal antibody (Cat # PAB7574) (0.3 ug/mL) staining of human adipose lysate (35 ug protein in RIPA buffer). Primary incubation was 1 hour. Detected by chemiluminescence.

- Enzyme-linked Immunoabsorbent Assay

## Gene Info — LYPLAL1

Entrez GeneID	<a href="#">127018</a>
Protein Accession#	<a href="#">NP_620149.1</a>
Gene Name	LYPLAL1
Gene Alias	FLJ99730, KIAA1238
Gene Description	lysophospholipase-like 1
Gene Ontology	<a href="#">Hyperlink</a>
Other Designations	OTTHUMP00000035229

## Publication Reference

- [Adipocyte triglyceride lipase expression in human obesity.](#)

Steinberg GR, Kemp BE, Watt MJ.

American Journal of Physiology. Endocrinology and Metabolism 2007 Oct; 293(4):E958.

## Disease

- [Genetic Predisposition to Disease](#)
- [Obesity](#)