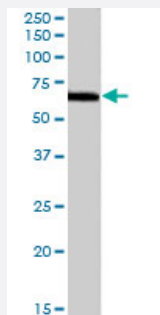


DACH2 polyclonal antibody

Catalog # PAB7541

Size 100 ug

Applications



Western Blot (Cell lysate)

DACH2 polyclonal antibody (Cat # PAB7541) (0.03 ug/mL) staining of NIH/3T3 cell lysate (35 ug protein in RIPA buffer). Primary incubation was 1 hour. Detected by chemiluminescence.

Specification

Product Description Goat polyclonal antibody raised against synthetic peptide of DACH2.

Immunogen A synthetic peptide corresponding to human DACH2.

Sequence C-TRKQAVNSSRPGR

Host Goat

Theoretical MW (kDa) 65.3

Reactivity Mouse

Form Liquid

Purification Antigen affinity purification

Concentration 0.5 mg/mL

Quality Control Testing Antibody Reactive Against Synthetic Peptide.

Recommend Usage
 ELISA (1:64000)
 Western Blot (0.03-0.1 ug/mL)
 The optimal working dilution should be determined by the end user.

| | |
|---------------------|--|
| Storage Buffer | In Tris saline, pH 7.3 (0.5% BSA, 0.02% sodium azide) |
| Storage Instruction | Store at -20°C. Aliquot to avoid repeated freezing and thawing. |
| Note | This product contains sodium azide: a POISONOUS AND HAZARDOUS SUBSTANCE which should be handled by trained staff only. |

Applications

- Western Blot (Cell lysate)

DACH2 polyclonal antibody (Cat # PAB7541) (0.03 ug/mL) staining of NIH/3T3 cell lysate (35 ug protein in RIPA buffer). Primary incubation was 1 hour. Detected by chemiluminescence.

- Enzyme-linked Immunoabsorbent Assay

Gene Info — DACH2

| | |
|--------------------|---|
| Entrez GeneID | 117154 |
| Protein Accession# | NP_444511.1 |
| Gene Name | DACH2 |
| Gene Alias | FLJ31391, MGC138545 |
| Gene Description | dachshund homolog 2 (Drosophila) |
| Omim ID | 300608 |
| Gene Ontology | Hyperlink |
| Gene Summary | <p>This gene is one of two genes which encode a protein similar to the Drosophila protein dachshund, a transcription factor involved in cell fate determination in the eye, limb and genital disc of the fly. The encoded protein contains two characteristic dachshund domains: an N-terminal domain responsible for DNA binding and a C-terminal domain responsible for protein-protein interactions. This gene is located on the X chromosome and is subject to inactivation by DNA methylation. The encoded protein may be involved in regulation of organogenesis and myogenesis, and may play a role in premature ovarian failure. Multiple transcript variants encoding different isoforms have been found for this gene. [provided by RefSeq]</p> |
| Other Designations | dachshund 2 |

Publication Reference

- [DACH1 inhibits transforming growth factor-beta signaling through binding Smad4.](#)

Wu K, Yang Y, Wang C, Davoli MA, D'Amico M, Li A, Cveklova K, Kozmik Z, Lisanti MP, Russell RG, Cvekl A, Pestell RG.

The Journal of Biological Chemistry 2003 Dec; 278(51):51673.

Disease

- [Cardiovascular Diseases](#)
- [Diabetes Mellitus](#)
- [Edema](#)
- [Ovarian Failure](#)
- [Translocation](#)