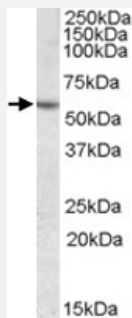


CES1 polyclonal antibody

Catalog # PAB7531

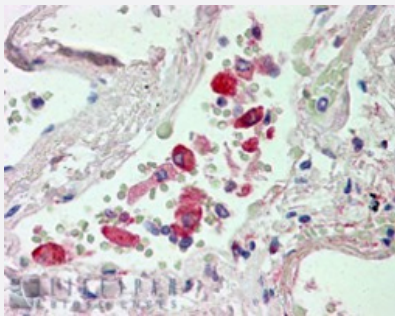
Size 100 ug

Applications



Western Blot (Tissue lysate)

CES1 polyclonal antibody (Cat # PAB7531) (0.03 ug/mL) staining of human liver lysate (35 ug protein in RIPA buffer). Primary incubation was 1 hour. Detected by chemiluminescence.



Immunohistochemistry (Formalin/PFA-fixed paraffin-embedded sections)

CES1 polyclonal antibody (Cat # PAB7531) (2.5 ug/mL) staining of paraffin embedded human lung. Steamed antigen retrieval with citrate buffer pH 6, AP-staining.

Specification

Product Description	Goat polyclonal antibody raised against synthetic peptide of CES1.
Immunogen	A synthetic peptide corresponding to human CES1.
Sequence	C-NTQAAQKLKDKE
Host	Goat
Theoretical MW (kDa)	62.6, 62.5, 62.4
Reactivity	Human

Specificity	This antibody is expected to recognize all three reported isoforms (NP_001020366.1; NP_001020365.1; NP_001257.4).
Form	Liquid
Purification	Antigen affinity purification
Concentration	0.5 mg/mL
Quality Control Testing	Antibody Reactive Against Synthetic Peptide.
Recommend Usage	ELISA (1:8000) Western blot (0.03-0.1 ug/mL) Immunohistochemistry (Formalin/PFA-fixed paraffin-embedded sections) (2-3 ug/mL) The optimal working dilution should be determined by the end user.
Storage Buffer	In Tris saline, pH 7.3 (0.5% BSA, 0.02% sodium azide)
Storage Instruction	Store at -20°C. Aliquot to avoid repeated freezing and thawing.
Note	This product contains sodium azide: a POISONOUS AND HAZARDOUS SUBSTANCE which should be handled by trained staff only.

Applications

- Western Blot (Tissue lysate)

CES1 polyclonal antibody (Cat # PAB7531) (0.03 ug/mL) staining of human liver lysate (35 ug protein in RIPA buffer). Primary incubation was 1 hour. Detected by chemiluminescence.

- Immunohistochemistry (Formalin/PFA-fixed paraffin-embedded sections)

CES1 polyclonal antibody (Cat # PAB7531) (2.5 ug/mL) staining of paraffin embedded human lung. Steamed antigen retrieval with citrate buffer pH 6, AP-staining.

- Enzyme-linked Immunoabsorbent Assay

Gene Info — CES1

Entrez GeneID	1066
Protein Accession#	NP_001020366.1;NP_001020365.1;NP_001257.4
Gene Name	CES1
Gene Alias	ACAT, CEH, CES2, HMSE, HMSE1, MGC117365, PCE-1, SES1, TGH

Gene Description	carboxylesterase 1 (monocyte/macrophage serine esterase 1)
Omim ID	114835
Gene Ontology	Hyperlink
Gene Summary	Carboxylesterase 1 is a member of a large multigene family. The enzymes encoded by these genes are responsible for the hydrolysis of ester- and amide-bond-containing drugs such as cocaine and heroin. They also hydrolyze long-chain fatty acid esters and thioesters. This enzyme is known to hydrolyze aromatic and aliphatic esters and is necessary for cellular cholesterol esterification. It may also play a role in detoxification in the lung and/or protection of the central nervous system from ester or amide compounds. Carboxylesterase deficiency may be associated with non-Hodgkin lymphoma or B-cell lymphocytic leukemia. Three transcript variants encoding three different isoforms have been found for this gene. [provided by RefSeq]
Other Designations	acyl coenzyme A:cholesterol acyltransferase carboxylesterase 1 carboxylesterase 2 (liver) cholesteryl ester hydrolase egaseyn liver carboxylesterase triacylglycerol hydrolase

Publication Reference

- [Adipocyte triglyceride lipase expression in human obesity.](#)

Steinberg GR, Kemp BE, Watt MJ.

American Journal of Physiology. Endocrinology and Metabolism 2007 Oct; 293(4):E958.

Pathway

- [Drug metabolism - other enzymes](#)
- [Tropane](#)

Disease

- [Attention Deficit Disorder with Hyperactivity](#)
- [Breast cancer](#)
- [Colorectal Neoplasms](#)
- [Genetic Predisposition to Disease](#)
- [Hypertension](#)