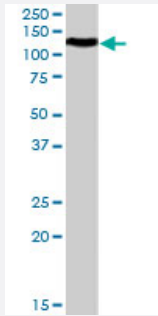


BOC polyclonal antibody

Catalog # PAB7526 Size 100 ug

Applications



Western Blot (Tissue lysate)

BOC polyclonal antibody (Cat # PAB7526) (0.3 ug/mL) staining of human ileum lysate (35 ug protein in RIPA buffer). Primary incubation was 1 hour. Detected by chemiluminescence.

Specification

Product Description Goat polyclonal antibody raised against synthetic peptide of BOC.

Immunogen A synthetic peptide corresponding to human BOC.

Sequence C-TQEVKTSGSSDRLR

Host Goat

Theoretical MW (kDa) 121

Reactivity Human

Form Liquid

Purification Antigen affinity purification

Concentration 0.5 mg/mL

Quality Control Testing Antibody Reactive Against Synthetic Peptide.

Recommend Usage
 ELISA (1:2000)
 Western Blot (0.3-1 ug/mL)
 The optimal working dilution should be determined by the end user.

Storage Buffer	In Tris saline, pH 7.3 (0.5% BSA, 0.02% sodium azide)
Storage Instruction	Store at -20°C. Aliquot to avoid repeated freezing and thawing.
Note	This product contains sodium azide: a POISONOUS AND HAZARDOUS SUBSTANCE which should be handled by trained staff only.

Applications

- Western Blot (Tissue lysate)

BOC polyclonal antibody (Cat # PAB7526) (0.3 ug/mL) staining of human ileum lysate (35 ug protein in RIPA buffer). Primary incubation was 1 hour. Detected by chemiluminescence.

- Enzyme-linked Immunoabsorbent Assay

Gene Info — BOC

Entrez GeneID	91653
Protein Accession#	NP_150279.1
Gene Name	BOC
Gene Alias	-
Gene Description	Boc homolog (mouse)
Omim ID	608708
Gene Ontology	Hyperlink
Gene Summary	CDON (MIM 608707) and BOC are cell surface receptors of the immunoglobulin (Ig)/fibronectin type III (FNIII; see MIM 135600) repeat family involved in myogenic differentiation. CDON and BOC are coexpressed during development, form complexes with each other in a cis fashion, and are related to each other in their ectodomains, but each has a unique long cytoplasmic tail.[supplied by OMIM]
Other Designations	brother of CDO

Publication Reference

- [Boc is a receptor for sonic hedgehog in the guidance of commissural axons.](#)

Okada A, Charron F, Morin S, Shin DS, Wong K, Fabre PJ, Tessier-Lavigne M, McConnell SK.

Nature 2006 Nov; 444(7117):369.

Application: IF, Mouse, Mouse spinal cord