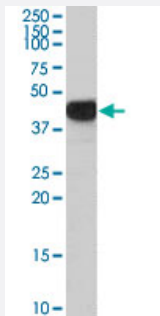


ASS1 polyclonal antibody

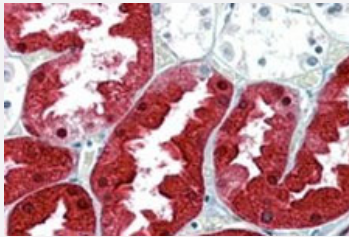
Catalog # PAB7517 Size 100 ug

Applications



Western Blot (Tissue lysate)

ASS1 polyclonal antibody (Cat # PAB7517) (0.03 ug/mL) staining of human kidney lysate (35 ug protein in RIPA buffer). Primary incubation was 1 hour. Detected by chemiluminescence.



Immunohistochemistry (Formalin/PFA-fixed paraffin-embedded sections)

ASS1 polyclonal antibody (Cat # PAB7517)(2.5 ug/mL) staining of paraffin embedded human kidney. Steamed antigen retrieval with citrate buffer pH 6, AP-staining.

Specification

Product Description	Goat polyclonal antibody raised against synthetic peptide of ASS1.
Immunogen	A synthetic peptide corresponding to internal region of human ASS1.
Sequence	C-ENPKNQAPPGLYTKTQD
Host	Goat
Theoretical MW (kDa)	46.5
Reactivity	Bovine, Human
Specificity	The variants represent identical protein (NP_000041.2 and NP_446464.1).

Form	Liquid
Purification	Antigen affinity purification
Concentration	0.5 mg/mL
Recommend Usage	ELISA (1:64000) Western Blot (0.01-0.03 ug/mL) Immunohistochemistry (Formalin/PFA-fixed paraffin-embedded sections) (2-4 ug/mL) The optimal working dilution should be determined by the end user.
Storage Buffer	In Tris saline, pH 7.3 (0.5% BSA, 0.02% sodium azide)
Storage Instruction	Store at -20°C. Aliquot to avoid repeated freezing and thawing.
Note	This product contains sodium azide: a POISONOUS AND HAZARDOUS SUBSTANCE which should be handled by trained staff only.

Applications

- Western Blot (Tissue lysate)

ASS1 polyclonal antibody (Cat # PAB7517) (0.03 ug/mL) staining of human kidney lysate (35 ug protein in RIPA buffer). Primary incubation was 1 hour. Detected by chemiluminescence.

- Immunohistochemistry (Formalin/PFA-fixed paraffin-embedded sections)

ASS1 polyclonal antibody (Cat # PAB7517)(2.5 ug/mL) staining of paraffin embedded human kidney. Steamed antigen retrieval with citrate buffer pH 6, AP-staining.

- Immunofluorescence

- Immunoprecipitation

- Enzyme-linked Immunoabsorbent Assay

Gene Info — ASS1

Entrez GeneID	445
Protein Accession#	NP_000041.2;NP_446464.1
Gene Name	ASS1
Gene Alias	ASS, CTLN1

Gene Description	argininosuccinate synthetase 1
Omim ID	215700 603470
Gene Ontology	Hyperlink
Gene Summary	<p>The protein encoded by this gene catalyzes the penultimate step of the arginine biosynthetic pathway. There are approximately 10 to 14 copies of this gene including the pseudogenes scattered across the human genome, among which the one located on chromosome 9 appears to be the only functional gene for argininosuccinate synthetase. Mutations in the chromosome 9 copy of ASS cause citrullinemia. Two transcript variants encoding the same protein have been found for this gene . [provided by RefSeq]</p>
Other Designations	OTTHUMP00000022362 OTTHUMP00000022363 OTTHUMP00000022364 citrulline--aspartate ligase

Publication Reference

- [Phosphorylation of argininosuccinate synthase by protein kinase A.](#)

Corbin KD, Pendleton LC, Solomonson LP, Eichler DC.

Biochemical and Biophysical Research Communications 2008 Oct; 377(4):1042.

Pathway

- [Alanine](#)
- [Arginine and proline metabolism](#)
- [Metabolic pathways](#)

Disease

- [Cardiovascular Diseases](#)
- [Diabetes Mellitus](#)
- [Edema](#)