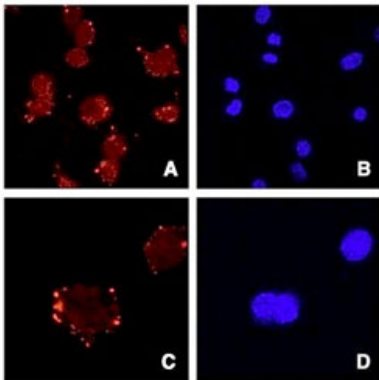


# ASPN polyclonal antibody

Catalog # PAB7503      Size 100 ug

## Applications



### Immunofluorescence

ASPN polyclonal antibody (Cat # PAB7503) staining of ATDC5 cells (Panels A and C) and DAPI (panels B and D). Data gratefully received from Dr. Shiro Ikegawa, SNP Research Center, RIKEN, Japan

## Specification

<b>Product Description</b>	Goat polyclonal antibody raised against synthetic peptide of ASPN.
<b>Immunogen</b>	A synthetic peptide corresponding to internal region of human ASPN.
<b>Sequence</b>	C-IHENKVKKIQKDT
<b>Host</b>	Goat
<b>Theoretical MW (kDa)</b>	43.4
<b>Reactivity</b>	Human, Mouse
<b>Form</b>	Liquid
<b>Purification</b>	Antigen affinity purification
<b>Concentration</b>	0.5 mg/mL
<b>Recommend Usage</b>	ELISA (1:64000) The optimal working dilution should be determined by the end user.

Storage Buffer	In Tris saline, pH 7.3 (0.5% BSA, 0.02% sodium azide)
Storage Instruction	Store at -20°C. Aliquot to avoid repeated freezing and thawing.
Note	This product contains sodium azide: a POISONOUS AND HAZARDOUS SUBSTANCE which should be handled by trained staff only.

## Applications

- Immunofluorescence

ASPEN polyclonal antibody (Cat # PAB7503) staining of ATDC5 cells (Panels A and C) and DAPI (panels B and D). Data gratefully received from Dr. Shiro Ikegawa, SNP Research Center, RIKEN, Japan

- Enzyme-linked Immunoabsorbent Assay

## Gene Info — ASPN

Entrez GeneID	<a href="#">54829</a>
Protein Accession#	<a href="#">NP_060150.3</a>
Gene Name	ASPN
Gene Alias	FLJ20129, PLAP1, SLRR1C
Gene Description	asporin
Omim ID	<a href="#">165720 608135</a>
Gene Ontology	<a href="#">Hyperlink</a>
Gene Summary	ASPN belongs to a family of leucine-rich repeat (LRR) proteins associated with the cartilage matrix. The name asporin reflects the unique aspartate-rich N terminus and the overall similarity to decorin (MIM 125255) (Lorenzo et al., 2001 [PubMed 11152692]).[supplied by OMIM]
Other Designations	OTTHUMP00000021657 asporin (LRR class 1) asporin proteoglycan periodontal ligament associated protein 1 small leucine-rich protein 1C

## Publication Reference

- [An aspartic acid repeat polymorphism in asporin inhibits chondrogenesis and increases susceptibility to osteoarthritis.](#)

Kizawa H, Kou I, Iida A, Sudo A, Miyamoto Y, Fukuda A, Mabuchi A, Kotani A, Kawakami A, Yamamoto S, Uchida A, Nakamura K, Notoya K, Nakamura Y, Ikegawa S.

Nature Genetics 2005 Feb; 37(2):138.

Application: IP-WB, Human, ATDC5 cells

## Disease

- [Arthritis](#)
- [Genetic Predisposition to Disease](#)
- [Osteoarthritis](#)
- [Spondylitis](#)