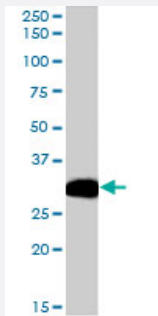


EFHD2 polyclonal antibody

Catalog # PAB7501

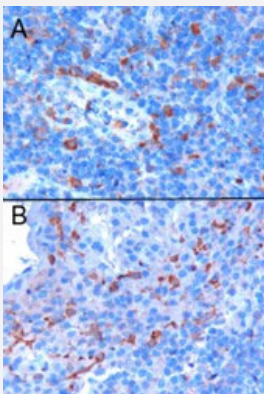
Size 100 ug

Applications



Western Blot (Tissue lysate)

EFHD2 polyclonal antibody (Cat # PAB7501) (0.1 ug/mL) staining of human lymph node lysate. Primary incubation was 1 hour. Detected by chemiluminescence.



Immunohistochemistry (Formalin/PFA-fixed paraffin-embedded sections)

EFHD2 polyclonal antibody (Cat # PAB7501) (0.3 ug/mL) staining of paraffin embedded human tonsil. Microwaved antigen retrieval with citrate buffer pH6, HRP-staining. Positive cells A) in the interfollicular area and surrounding a vessel, B) in proximity of the epithelial cryptae.

Specification

Product Description	Goat polyclonal antibody raised against synthetic peptide of EFHD2.
Immunogen	A synthetic peptide corresponding to human EFHD2.
Sequence	CAAFKELQSTFK
Host	Goat
Theoretical MW (kDa)	26.7
Reactivity	Human, Mouse

Specificity	This antibody does not cross-react with Mouse Swiprosin 2. Data kindly provided by Sebastian Duettling and Dirk Mielenz.
Form	Liquid
Purification	Antigen affinity purification
Concentration	0.5 mg/mL
Quality Control Testing	Antibody Reactive Against Synthetic Peptide.
Recommend Usage	ELISA (1:16000) Western Blot (0.1-0.3 ug/mL) The optimal working dilution should be determined by the end user.
Storage Buffer	In Tris saline, pH 7.3 (0.5% BSA, 0.02% sodium azide)
Storage Instruction	Store at -20°C. Aliquot to avoid repeated freezing and thawing.
Note	This product contains sodium azide: a POISONOUS AND HAZARDOUS SUBSTANCE which should be handled by trained staff only.

Applications

- Western Blot (Tissue lysate)

EFHD2 polyclonal antibody (Cat # PAB7501) (0.1 ug/mL) staining of human lymph node lysate. Primary incubation was 1 hour. Detected by chemiluminescence.

- Immunohistochemistry (Formalin/PFA-fixed paraffin-embedded sections)

EFHD2 polyclonal antibody (Cat # PAB7501) (0.3 ug/mL) staining of paraffin embedded human tonsil. Microwaved antigen retrieval with citrate buffer pH6, HRP-staining. Positive cells A) in the interfollicular area and surrounding a vessel, B) in proximity of the epithelial cryptae.

- Enzyme-linked Immunoabsorbent Assay

Gene Info — EFHD2

Entrez GeneID	79180
Protein Accession#	NP_077305.2
Gene Name	EFHD2
Gene Alias	MGC4342

Gene Description	EF-hand domain family, member D2
Gene Ontology	Hyperlink
Gene Summary	O
Other Designations	EF hand domain containing 2 EF hand domain family, member D2 OTTHUMP00000002319 nove I EF Hand domain-containing protein swiprosin 1

Publication Reference

- [Identification of swiprosin 1 in human lymphocytes.](#)

Vuadens F, Rufer N, Kress A, Corthesy P, Schneider P, Tissot JD.

Proteomics 2004 Aug; 4(8):2216.