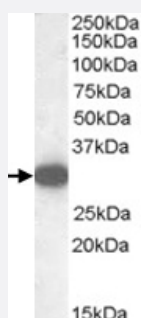


MGLL polyclonal antibody

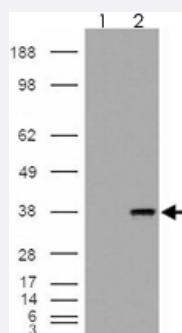
Catalog # PAB7494 Size 100 ug

Applications



Western Blot (Tissue lysate)

MGLL polyclonal antibody (Cat # PAB7494) (0.5 ug/mL) staining of human adipose lysate (35 ug protein in RIPA buffer). Primary incubation was 1 hour. Detected by chemiluminescence.



Western Blot (Transfected lysate)

293 overexpressing MGLL and probed with MGLL polyclonal antibody (Cat # PAB7494) (mock transfection in first lane), tested by Origene.

Specification

Product Description	Goat polyclonal antibody raised against synthetic peptide of MGLL.
Immunogen	A synthetic peptide corresponding to human MGLL.
Sequence	C-QDLPHLVNADGQY
Host	Goat
Theoretical MW (kDa)	34.3, 33.3
Reactivity	Human

Specificity	This antibody is expected to recognize both reported isoforms (NP_009214.1 and NP_0010.03794.1).
Form	Liquid
Purification	Antigen affinity purification
Concentration	0.5 mg/mL
Quality Control Testing	Antibody Reactive Against Synthetic Peptide.
Recommend Usage	ELISA (1:32000) Western Blot (0.5-1.5 ug/mL) The optimal working dilution should be determined by the end user.
Storage Buffer	In Tris saline, pH 7.3 (0.5% BSA, 0.02% sodium azide)
Storage Instruction	Store at -20°C. Aliquot to avoid repeated freezing and thawing.
Note	This product contains sodium azide: a POISONOUS AND HAZARDOUS SUBSTANCE which should be handled by trained staff only.

Applications

- Western Blot (Tissue lysate)

MGLL polyclonal antibody (Cat # PAB7494) (0.5 ug/mL) staining of human adipose lysate (35 ug protein in RIPA buffer). Primary incubation was 1 hour. Detected by chemiluminescence.

- Western Blot (Transfected lysate)

293 overexpressing MGLL and probed with MGLL polyclonal antibody (Cat # PAB7494) (mock transfection in first lane), tested by Origene.

- Enzyme-linked Immunoabsorbent Assay

Gene Info — MGLL

Entrez GeneID	11343
Protein Accession#	NP_009214.1;NP_0010.03794.1
Gene Name	MGLL
Gene Alias	HU-K5, HUK5, MGL

Gene Description	monoglyceride lipase
Omim ID	609699
Gene Ontology	Hyperlink
Gene Summary	Monoglyceride lipase (MGLL; EC 3.1.1.23) functions together with hormone-sensitive lipase (LIP E; MIM 151750) to hydrolyze intracellular triglyceride stores in adipocytes and other cells to fatty acids and glycerol. MGLL may also complement lipoprotein lipase (LPL; MIM 238600) in completing hydrolysis of monoglycerides resulting from degradation of lipoprotein triglycerides (Karlsson et al., 2001 [PubMed 11470505]).[supplied by OMIM]
Other Designations	lysophospholipase-like monoacylglycerol lipase

Publication Reference

- [A comprehensive profile of brain enzymes that hydrolyze the endocannabinoid 2-arachidonoylglycerol.](#)

Blankman JL, Simon GM, Cravatt BF.

Chemistry & Biology 2007 Dec; 14(12):1347.

Pathway

- [Glycerolipid metabolism](#)
- [Metabolic pathways](#)

Disease

- [Alcoholism](#)
- [Cardiovascular Diseases](#)
- [Diabetes Mellitus](#)
- [Edema](#)
- [Genetic Predisposition to Disease](#)
- [Obesity](#)