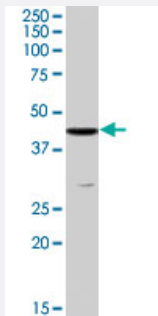


CBX8 polyclonal antibody

Catalog # PAB7489

Size 100 ug

Applications



Western Blot (Cell lysate)

CBX8 polyclonal antibody (Cat # PAB7489) (0.1 ug/mL) staining of K-562 lysate (35 ug protein in RIPA buffer). Primary incubation was 1 hour. Detected by chemiluminescence.

Specification

Product Description Goat polyclonal antibody raised against synthetic peptide of CBX8.

Immunogen A synthetic peptide corresponding to human CBX8.

Sequence C-RERGTSRVDDKPSS

Host Goat

Theoretical MW (kDa) 43.4

Reactivity Human

Form Liquid

Purification Antigen affinity purification

Concentration 0.5 mg/mL

Quality Control Testing Antibody Reactive Against Synthetic Peptide.

Recommend Usage
ELISA (1:32000)
Western Blot (0.1-0.3 ug/mL)
The optimal working dilution should be determined by the end user.

Storage Buffer	In Tris saline, pH 7.3 (0.5% BSA, 0.02% sodium azide)
Storage Instruction	Store at -20°C. Aliquot to avoid repeated freezing and thawing.
Note	This product contains sodium azide: a POISONOUS AND HAZARDOUS SUBSTANCE which should be handled by trained staff only.

Applications

- Western Blot (Cell lysate)

CBX8 polyclonal antibody (Cat # PAB7489) (0.1 ug/mL) staining of K-562 lysate (35 ug protein in RIPA buffer). Primary incubation was 1 hour. Detected by chemiluminescence.

- Enzyme-linked Immunoabsorbent Assay

Gene Info — CBX8

Entrez GeneID	57332
Protein Accession#	NP_065700.1
Gene Name	CBX8
Gene Alias	HPC3, PC3, RC1
Gene Description	chromobox homolog 8 (Pc class homolog, Drosophila)
Gene Ontology	Hyperlink
Gene Summary	O
Other Designations	chromobox homolog 8 polycomb 3

Publication Reference

- [Bypass of senescence by the polycomb group protein CBX8 through direct binding to the INK4A-ARF locus.](#)

Dietrich N, Bracken AP, Trinh E, Schjerling CK, Koseki H, Rappsilber J, Helin K, Hansen KH.

The EMBO Journal 2007 Mar; 26(6):1637.

Application: ChIP, IF, WB, Human, Human diploid fibroblasts, U2OS cells