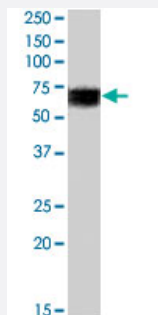


BIN1 polyclonal antibody

Catalog # PAB7487 Size 100 ug

Applications



Western Blot (Tissue lysate)

BIN1 polyclonal antibody (Cat # PAB7487) (0.1 ug/mL) staining of human skeletal muscle lysate (35 ug protein in RIPA buffer). Primary incubation was 1 hour. Detected by chemiluminescence.

Specification

Product Description	Goat polyclonal antibody raised against synthetic peptide of BIN1.
Immunogen	A synthetic peptide corresponding to human BIN1.
Sequence	C-SDNAPAKGNKSPS
Host	Goat
Theoretical MW (kDa)	45.6, 64.7
Reactivity	Human
Specificity	This antibody is expected to recognize isoform 1, 2, 3, 4, 5, 6, 7, 8, 9 and 10 (NP_647593.1, NP_647594.1, NP_647595.1, NP_647596.1, NP_647597.1, NP_647598.1, NP_647599.1, NP_004296.1, NP_647600.1, NP_647601.1).
Form	Liquid
Purification	Antigen affinity purification
Concentration	0.5 mg/mL
Quality Control Testing	Antibody Reactive Against Synthetic Peptide.

Recommend Usage	ELISA (1:1000) Western Blot (1-3 ug/mL) The optimal working dilution should be determined by the end user.
Storage Buffer	In Tris saline, pH 7.3 (0.5% BSA, 0.02% sodium azide)
Storage Instruction	Store at -20°C. Aliquot to avoid repeated freezing and thawing.
Note	This product contains sodium azide: a POISONOUS AND HAZARDOUS SUBSTANCE which should be handled by trained staff only.

Applications

- Western Blot (Tissue lysate)

BIN1 polyclonal antibody (Cat # PAB7487) (0.1 ug/mL) staining of human skeletal muscle lysate (35 ug protein in RIPA buffer). Primary incubation was 1 hour. Detected by chemiluminescence.

- Enzyme-linked Immunoabsorbent Assay

Gene Info — BIN1

Entrez GeneID	274
Protein Accession#	NP_004296.1;NP_647593.1;NP_647594.1;NP_647595.1;NP_647596.1;NP_647597.1;NP_647598.1;NP_647599.1;NP_647600.1;NP_647601.1
Gene Name	BIN1
Gene Alias	AMPH2, AMPHL, DKFZp547F068, MGC10367, SH3P9
Gene Description	bridging integrator 1
Omim ID	255200 601248
Gene Ontology	Hyperlink

Gene Summary	This gene encodes several isoforms of a nucleocytoplasmic adaptor protein, one of which was initially identified as a MYC-interacting protein with features of a tumor suppressor. Isoforms that are expressed in the central nervous system may be involved in synaptic vesicle endocytosis and may interact with dynamin, synaptotagmin, endophilin, and clathrin. Isoforms that are expressed in muscle and ubiquitously expressed isoforms localize to the cytoplasm and nucleus and activate a caspase-independent apoptotic process. Studies in mouse suggest that this gene plays an important role in cardiac muscle development. Alternate splicing of the gene results in ten transcript variants encoding different isoforms. Aberrant splice variants expressed in tumor cell lines have also been described. [provided by RefSeq]
---------------------	--

Other Designations

OTTHUMP00000162179|OTTHUMP00000162183|amphiphysin II|amphiphysin-like|box dependent MYC interacting protein 1

Publication Reference

- [Bin1 attenuation in breast cancer is correlated to nodal metastasis and reduced survival.](#)

Ghaneie A, Zemba-Palko V, Itoh H, Itoh K, Sakamuro D, Nakamura S, Soler AP, Prendergast GC.

Cancer Biology & Therapy 2007 Feb; 6(2):192.

Application: IHC-P, Human, Human ductal breast carcinomas

Disease

- [Alzheimer Disease](#)
- [Cerebral Hemorrhage](#)
- [Cognition Disorders](#)
- [Genetic Predisposition to Disease](#)
- [Hypertension](#)
- [Intracranial Hemorrhages](#)
- [Neuropsychological Tests](#)
- [Stroke](#)
- [Subarachnoid Hemorrhage](#)